



# Instruction Manual

Tornado P1 Mini Bowser  
Tornado P2 Mini Bowser  
Tornado P4 Mini Bowser  
Tornado D1ES Mini Bowser  
Tornado Storm 1 Mini Bowser

Including electric start variants and bowser washers

## Declaration of Conformity (E.H.S.R.)

We, Demon International Limited of Abbots Close, Lee Mill Industrial Estate, Ivybridge, Devon, PL21 9GA, declare that this machine must be operated in accordance with the operation and safety instructions as supplied with this machine.

This machine is manufactured in accordance with the following standards and recommendations.

HSE PVB PM29 - BS5415 Part - BS5415 Section 2.4 1986

This instruction manual is relevant only to the following machine and will not be kept updated unless specifically requested by the customer. However, any changes to the operating procedure or changes which might affect the safety of this machine will be notified to the registered owner.

|                         |  |
|-------------------------|--|
| <b>Machine Type</b>     |  |
| <b>Serial Number</b>    |  |
| <b>Working Pressure</b> |  |
| <b>Date of Supply</b>   |  |



# Technical Specifications

## Tornado P1 Mini Bowser

|             |             |
|-------------|-------------|
| Engine      | Honda GX160 |
| Pump        | RSV3G25     |
| Pressure    | 1500 PSI    |
| Flow        | 11 lpm      |
| Nozzle      | 2504        |
| Gearbox     | None        |
| Unloader    | Integrated  |
| Pump Oil    | 10W/40      |
| Gearbox Oil | N/A         |

## Tornado P4 Mini Bowser

|             |                    |
|-------------|--------------------|
| Engine      | Honda GX340        |
| Pump        | RK15-20H           |
| Pressure    | 2900 PSI / 200 Bar |
| Flow        | 15 lpm             |
| Nozzle      | 2504               |
| Gearbox     | 2:1 Reduction      |
| Unloader    | Gymatic3B          |
| Pump Oil    | 10W/40             |
| Gearbox Oil | EP90               |

## Tornado P2 Mini Bowser

|             |               |
|-------------|---------------|
| Engine      | Honda GX200   |
| Pump        | XT13-15       |
| Pressure    | 2200 PSI      |
| Flow        | 13 lpm        |
| Nozzle      | 2504          |
| Gearbox     | 2:1 Reduction |
| Unloader    | ARMM4B        |
| Pump Oil    | 10W/40        |
| Gearbox Oil | EP90          |

## Tornado D1ES Mini Bowser

|          |               |
|----------|---------------|
| Engine   | Yanmar L70    |
| Pump     | XT13-15       |
| Pressure | 2200 PSI      |
| Flow     | 13 lpm        |
| Nozzle   | 2504          |
| Gearbox  | 2:1 Reduction |
| Unloader | ARMM4B        |
| Pump Oil | 10W/40        |
| Gearbox  | EP90          |

## Tornado Storm 1 Mini Bowser

|                     |                    |
|---------------------|--------------------|
| Pump                | XT11-14            |
| Pressure            | 1500 PSI / 100 Bar |
| Flow Rate           | 11 lpm             |
| Max by pass setting | 120 bar /1750 psi  |
| Nozzle              | 2504               |
| Pump oil            | 10W/40             |
| Unloader valve      | ARMM4B/C           |
| Noise               |                    |

|              |               |
|--------------|---------------|
| Motor        | MTR00100      |
| Motor output | P1 2.2KW      |
| Motor input  | P2 3.0KW      |
| Max current  | 12.5 amps     |
| Voltage      | 230v + or—10V |
| Insulation   | Class F       |
| Duty Cycle   | 100%          |
| Protection   | IP54          |



# Minimum Service Schedule

## DAILY CHECK THE FOLLOWING

- a. Oil level - top up as required.
- b. Fuel tank - top up as required.
- c. All hose unions for leaks- replace O rings if leaking.
- d. Hose condition - cuts etc.

## EVERY 500 HOURS OR SIX MONTHS (WHICHEVER COMES FIRST)

- a. Drain and replace pump oil.
- b. Drain and refill fuel tank.
- c. Replace fuel filter.
- d. Clean water filter.
- e. Replace high pressure nozzle.

## EVERY 1000 HOURS OR 12 MONTHS (WHICHEVER COMES FIRST)

- a. Complete 500 hour service.
- b. Replace pump seals.
- c. Replace oil seals.
- d. Check unloading pressure and safety valve pressure and adjust.

The above service schedules are intended as a guide only, actual service times and replacements parts required will vary according to the area and the usage of the machine.

## Kits for the Tornado Mini Bowser Range

| Machine          | P1   | P2   | P4   | D1ES | Storm 1 |
|------------------|------|------|------|------|---------|
| Valve Kit        | 2186 | 1864 | 1828 | 1864 | 1864    |
| Seal Kit         | 2189 | 1874 | 1857 | 1874 | 1874    |
| Piston Kit       | 2187 | 2629 | 2757 | 2629 | 2629    |
| Oil Kit          | 2188 | 1872 | 1855 | 1872 | 1872    |
| Support Ring Kit | 2191 |      | 1829 |      |         |
| O Rings          | 2190 | 2812 |      |      |         |



# Operating Instructions

## SAFETY

I Water at high pressure is dangerous and can cause serious injury. This machine is to be used with great caution.

II Petrol is extremely flammable and explosive under certain conditions.

EXHAUST FUMES CONTAIN CARBON MONOXIDE – Inhalation of such fumes can KILL.

III Diesel is flammable and harmful if swallowed.

A Always refuel in an area which is adequately ventilated.

B DO NOT smoke when refuelling.

C Avoid overfilling.

D Should fuel be spilt, wipe off any fuel spilt on machine or engine.

E Move the equipment away from the area where fuel has been spilt.

F DO NOT refuel when the engine is running.

G DO NOT run the engine in an area which has a hazardous or explosive atmosphere.

H Always ensure that the fuel cap is secure after refuelling.

I Keep the engine at least 3 metres or more away from any other equipment or Building.

J Take care not to get fuel on your clothing. If this happens – CHANGE your clothing IMMEDIATELY.

DO NOT start an engine when clothing has been contaminated with fuel.

- K Use only approved type containers for fuel. DO NOT stand them out in strong sunlight, keep them in the shade.
- L ALWAYS ensure that there is a suitable type fire extinguisher available and is within easy access.
- M DO NOT leave an engine running unattended, ALWAYS STOP it before leaving the area.
- N NEVER point the high pressure spray jet at any person, animal, glass or other material which may shatter.
- O PREVENT any over spray from injuring other people or damaging property.
- P DO NOT even try to use a pressure washer on machinery or electrical equipment that is connected in any way to the mains supply ( ALL switches in the OFF position, pull out plugs, if possible remove fuses). Cover or seal electric motors and fittings to prevent entry of water. Before reconnecting electric mains supply check for water penetration.
- Q DO ALL you can to keep plugs and sockets in a dry place or covered to prevent entry of water.
- R ALWAYS when using this machine:-
- wear safety goggles and helmet or helmet with a visor.
  - Wear waterproof clothing and gloves.
  - Take particular care with detergents and chemicals.
- S NEVER attempt to disconnect any hose with pressure in it or allow the hose to be flattened or kinked.
- T DO NOT use a high pressure hose from a ladder. Use a platform tower or proper scaffolding.
- U Should the equipment fail to operate, DO NOT attempt to rectify or repair, but contact the nearest Service Centre for advice.
- V ALWAYS rinse your pump out after using sea water.



# Preparation

## **Water Supply:**

- A Ensure there is an adequate water supply either from the mains or a reservoir.
  
- B Attach water supply hoses to suitable tap or immerse the suction hose with approved suction filter into the reservoir.

**NOTE: ONLY CLEAN WATER SHOULD BE USED. THE PUMP MAY BE DAMAGED IF DIRTY OR CONTAMINATED WATER IS ALLOWED TO PASS THROUGH THE PUMP.**

Hoses: Low pressure inlet.

For models up to 13 litres per minute use ½ “ bore suction hose or feed pipe.

For models from 13 litres to 24 litres per minute use ¾” bore suction hose or feed pipe.

Hoses: High pressure outlet.

For all models use 3/8” RIT or 3/8” R2T hoses.

- A Check the condition of the “O” rings in the ends of the hose.
  
- B Attach the high pressure hose to the pump connection.
  
- C Attach the spray gun to opposite ends of the high pressure hose.

- E On completion of operation stop the DC motor.
- F Operate lance trigger
- G Release residual pressure in gun and lance by operating trigger.

**When using Cleaning Agents:**

- A. Set machine up as for water.
- B. Connect detergent hose to machine and place filter end into detergent.
- C. On completion of work, flush through hose and gun with clean water to remove any residual detergent.

NOTE: CHEMICAL PICKUP ONLY OPERATES AT PRESSURES BELOW  
250PSI.

OPEN LANCE VALVE FULLY TO OBTAIN THIS PRESSUR



# Preparation of Storm Mini Bowser

## Water Supply:

- a. Ensure there is an adequate water supply either from the mains or a reservoir.
- b. Attach water supply hoses to suitable tap or immerse end of hose into reservoir

## Hoses:

- a. Attach the high pressure hose to the pump connection.
- b. Attach the spray gun to opposite end of the high pressure hose.

## OPERATION

(Check that electric motor is switched 'OFF')

- a. Plug into a suitable electrical source. (Not an extension lead)
- b. Turn on water supply.
- c. Ensure that the trigger is 'OPEN' to vent air from the pump.
- d. Switch 'ON' electric motor.
- e. Open regulator nozzle slightly and direct lance on surface to be cleaned. Press operating trigger.
- f. Adjust pressure regulator as required to obtain working pressure.
- g. NOTE: The high pressure water will cause the gun to 'kick'. Make sure you have a firm grip of the gun and lance.
- h. On completion of the operation switch 'OFF' electric motor and unplug from power supply.
- i. Turn 'OFF' water supply.
- j. Release residual pressure in gun and lance by operating trigger.

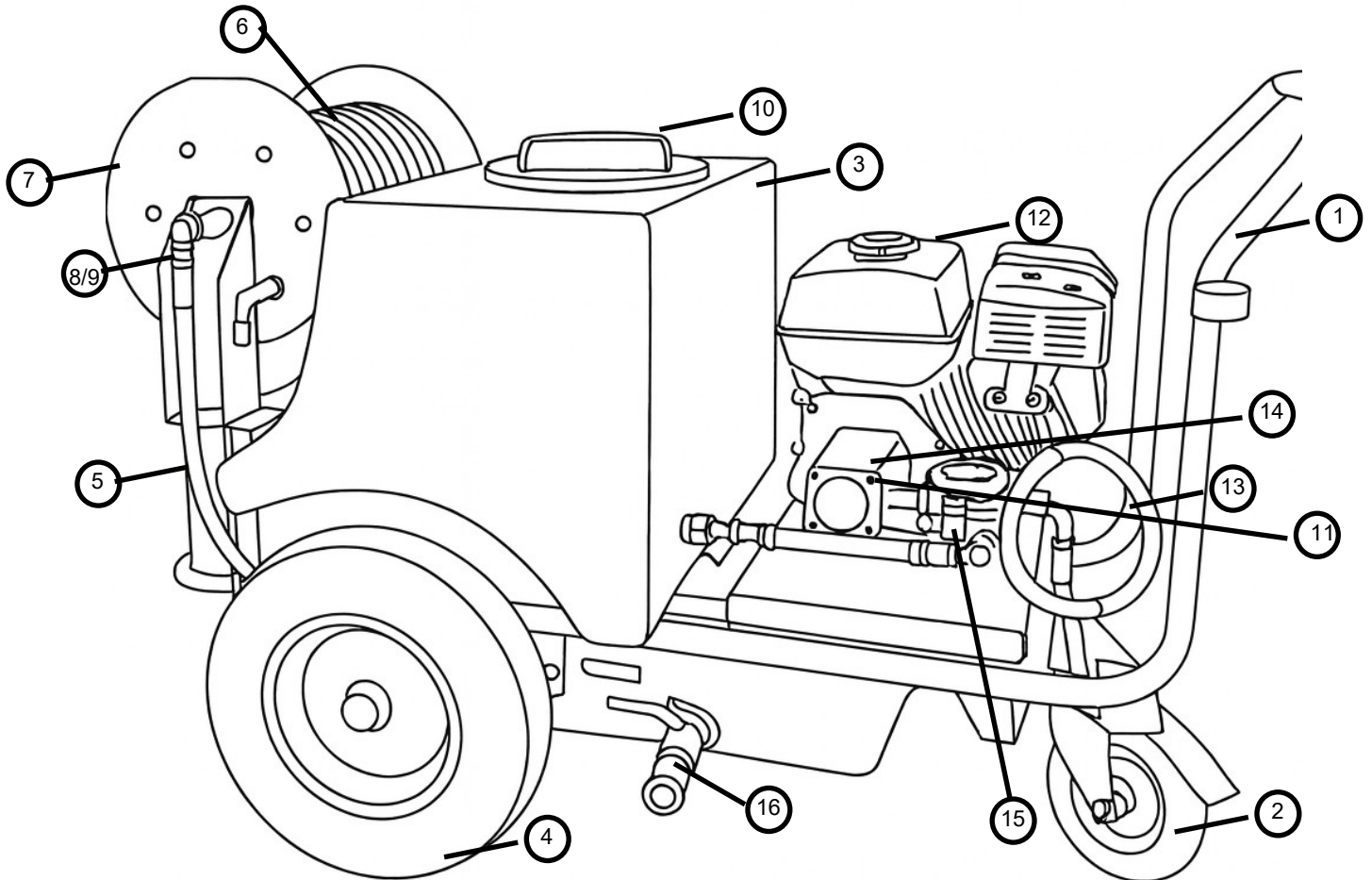


# Fault Finder

| FAULT  | CAUSE   | REMEDY  |
|--|---|---|
| Machine stops suddenly<br>Or will not start.                     | Low oil<br><br>Out of gas<br>(LPG)<br><br>Flat Battery<br>(Electron ) | Check and top up oil<br>Change gas bottle<br>Re-charge                        |
| Sudden pressure loss.  | Water supply failed.<br>No chemical                                   | Check water supply.<br>Check chemical drum, close valve                       |
| Low pressure   | HP nozzle worn or un-loader set<br>Incorrectly.                       | Replace HP nozzle. Set un-loader to correct setting.                          |
| Low pressure with noise and vibration.                           | Valves worn or blocked. Piston seals worn.<br>Pump sucking air.       | Clean/replace as required.<br>Replace.<br>Check water supply pipe and unions. |
| Pump will not by-pass.   | Non return valve dirty or jammed.                                     | Clean or replace.   |
| Water drips from pump box.                                       | Pump seals worn.  | Replace.  |
| Oil drips from pump bottom.                                      | Oil seal worn.  | Replace.  |
| Oil is milky in colour.  | Water ingress through oil filter plug.                                | Rinse pump out and replace oil.   |
| <b>IF IN DOUBT ASK—OUR ADVICE IS FREE AND CAN SAVE YOU MONEY</b> |   |   |



# Mini Bowser General Arrangement



|   |                 |          |    |                  |          |
|---|-----------------|----------|----|------------------|----------|
| 1 | Frame           | TOR0114  | 9  | O Rings          | MTM20024 |
| 2 | Braked Castor   | WHEEL500 | 10 | Tank lid         | TOR0116  |
| 3 | Tank            | TOR0113  | 11 | Pump             |          |
| 4 | Wheel           | Wheel400 | 12 | Engine           |          |
| 5 | Pump to HR Hose | HH00187  | 13 | Chemical Pick up | DEM10115 |
| 6 | 15m Hose for HR | HH00051  | 14 | Unloader Valve   | ARGM3AID |
| 7 | Hose Reel       | MTM20017 | 15 | Pressure Gauge   | DEM20620 |
| 8 | Brass Swivel    |          | 16 | Fast Drain       | BV12169  |



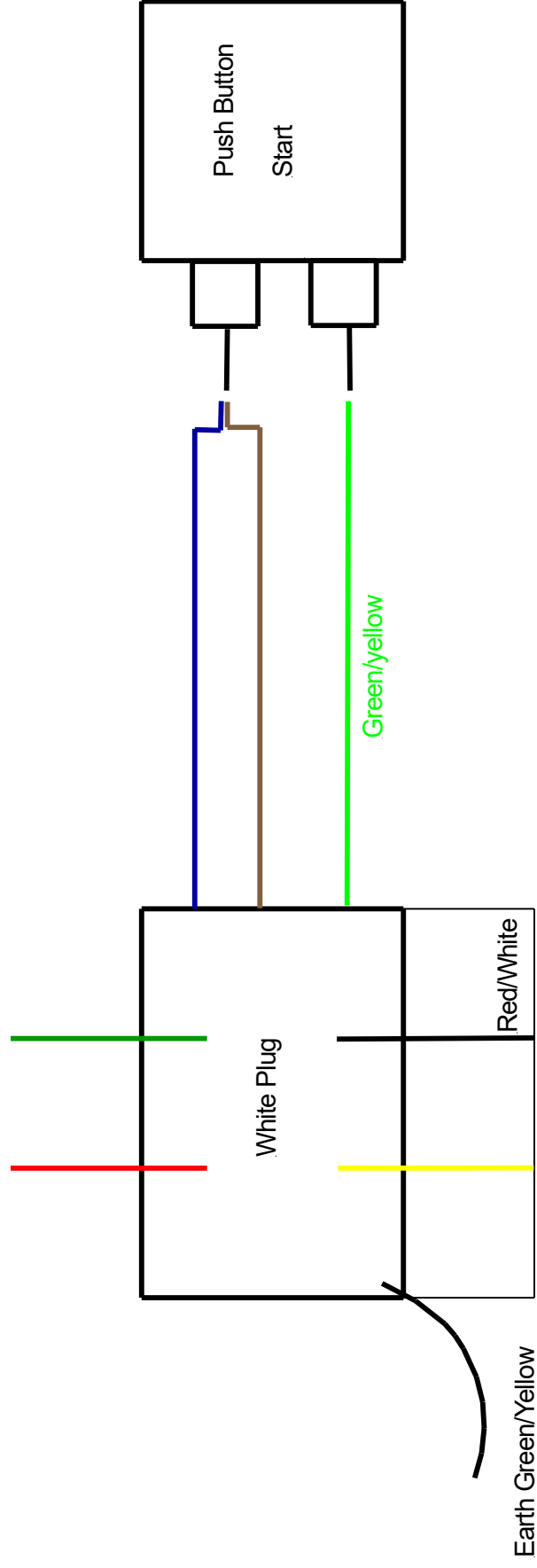
# Mini Bowser Easy Start Valve



|   |                    |          |   |                  |           |
|---|--------------------|----------|---|------------------|-----------|
| 1 | Female Outlet      | MTM70013 | 5 | Pressure Gauge   | DEM20621  |
| 2 | 1/8 Hose Barb      | DEM20401 | 6 | Easy Start Valve | MTM39001  |
| 3 | Female& Male Inlet | MTM10003 | 7 | Valve Cap        | AR1260151 |
| 4 | Water Inlet Pipe   | DEM10321 | 8 |                  |           |

Push Button Start Electrical Wiring for Diesel Machines

KTW 8/11/18

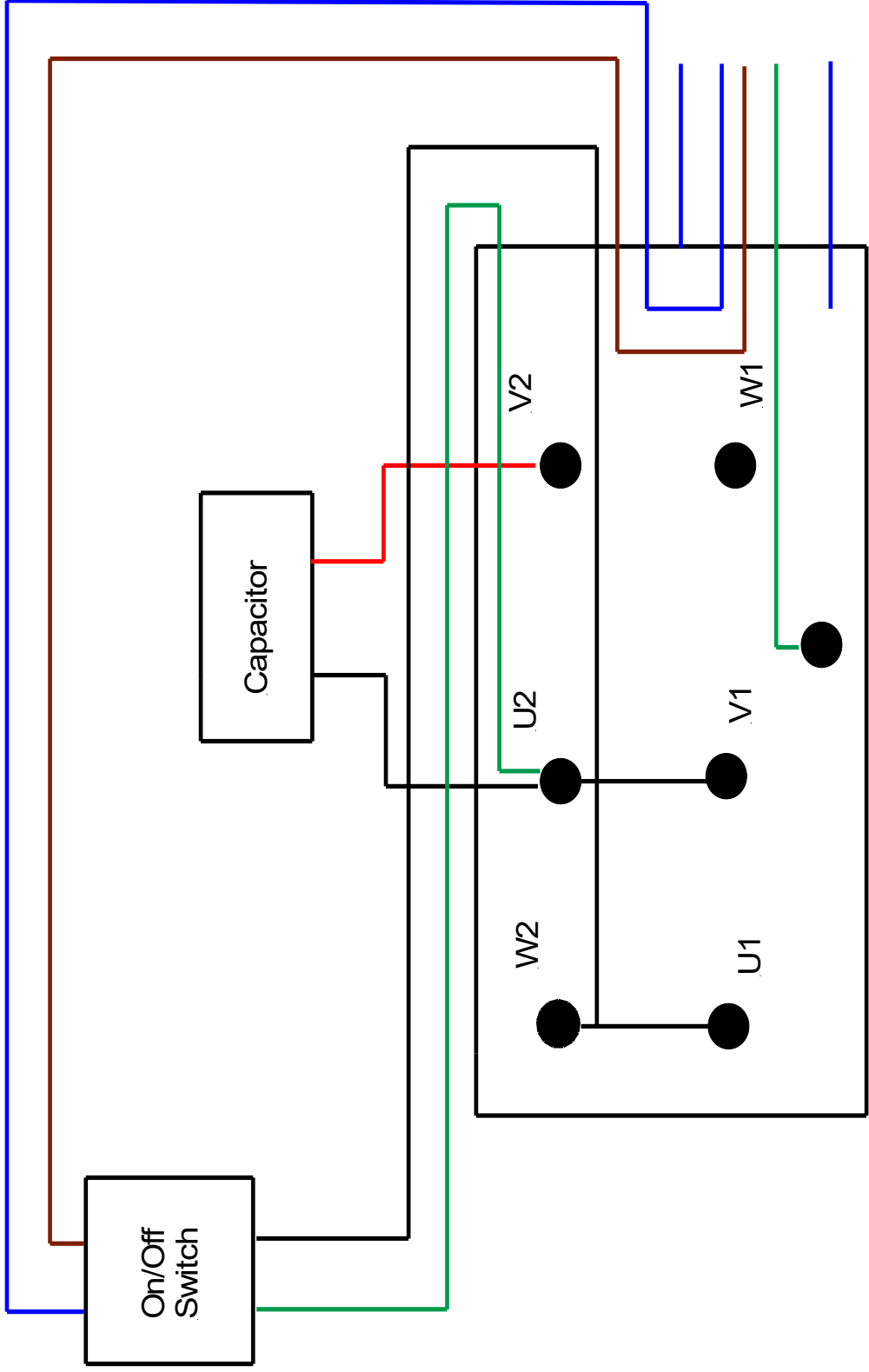


Blue to Green  
Brown to Red/White  
Green/Yellow - Red  
Green/Yellow - Yellow

Single Earth

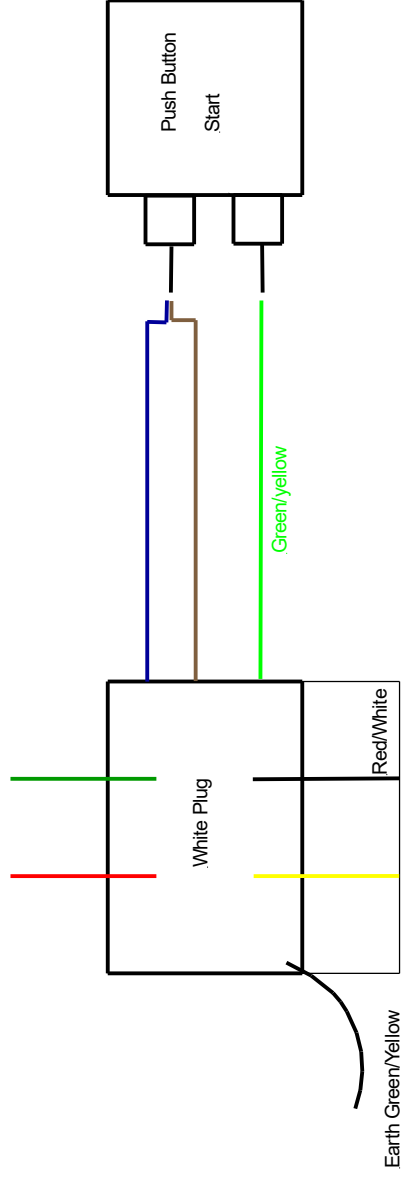
Join Brown and Blue to Switch  
and Green/Yellow to Switch

Storm 240V



Push Button Start Electrical Wiring for Diesel Machines

KTW 8/11/18



Join Brown and Blue to Switch  
and Green/Yellow to Switch

Blue to Green  
Brown to Red/White  
Green/Yellow - Red  
Green/Yellow - Yellow

Single Earth

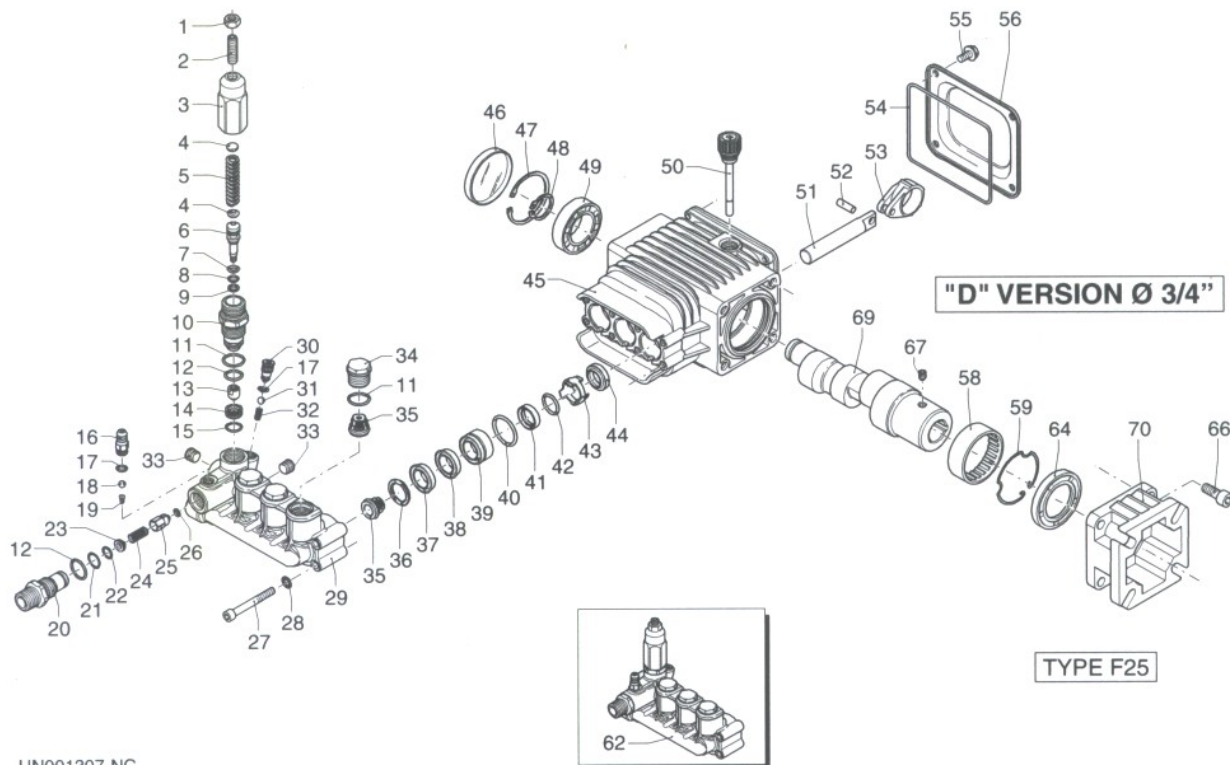
# Pump for Mini Bowser P1

## Complete Pump: ARRSV3G25

# RSV

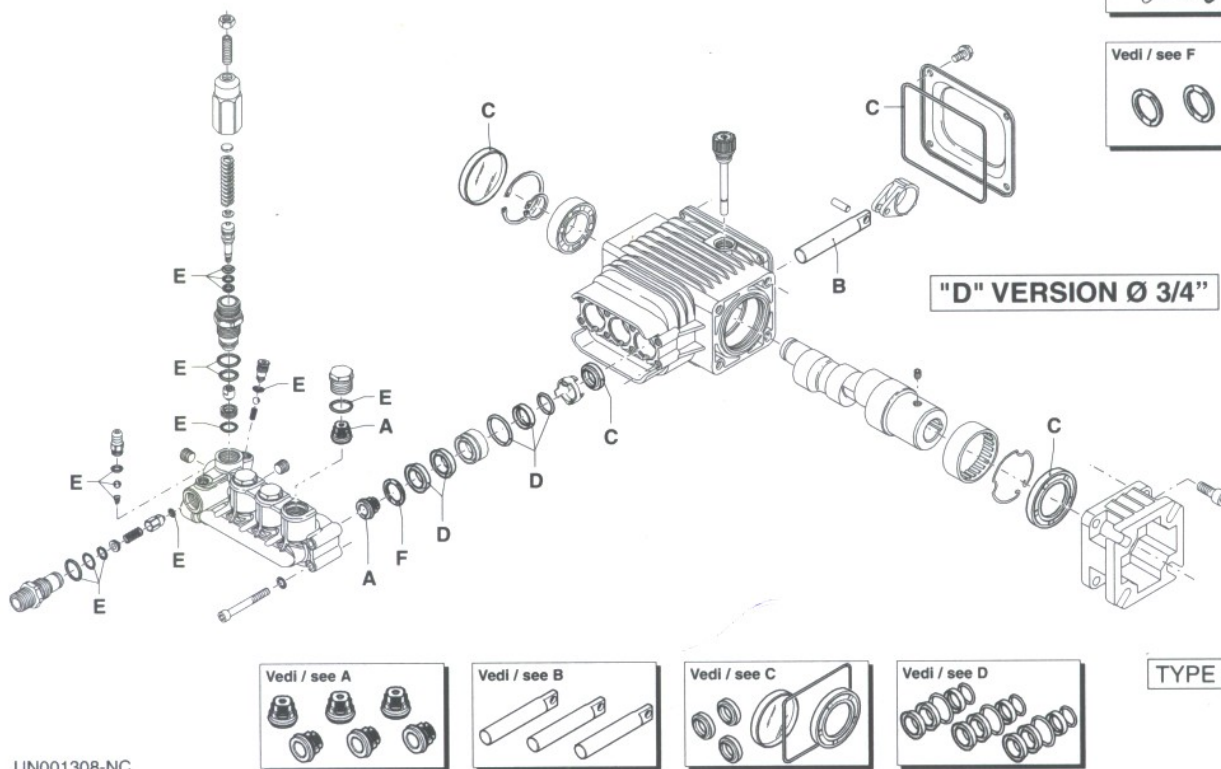
VERSION **D** 3400 RPM

# Ø 3/4"



UN001307-NC

## KIT RICAMBI / PART KITS



UN001308-NC

# Pump for Mini Bowser P1

## Complete Pump: ARRSV3G25

# RSV

VERSION

# D 3400

RPM

# Ø 3/4"



| Pos. | Cod.<br>Part n° | Denominazione         | Description        | Q.tà<br>Q.ty | Note<br>Vedi / See | Pos. | Cod.<br>Part n° | Denominazione        | Description        | Q.tà<br>Q.ty | Note<br>Vedi / See |
|------|-----------------|-----------------------|--------------------|--------------|--------------------|------|-----------------|----------------------|--------------------|--------------|--------------------|
| 1    | 1980300         | Dado M 6              | Nut                | 1            |                    | 43   | 2760310         | Distanziale          | Spacer             | 3            |                    |
| 2    | 2760420         | Grano M 6X12          | Grub screw         | 1            |                    | 44   | 1260460         | Anello tenuta        | Seal               | 3            |                    |
| 3    | 1980540         | Inserto manopola      | Handle insert      | 1            |                    | 45   | 2760010         | Corpo pompa          | Pump body          | 1            |                    |
| 4    | 1980220         | Piattello molla       | Plate spring       | 2            |                    | 46   | 1266740         | Cappellotto chiusura | Cap                | 1            |                    |
| 5    | 2760410         | Molla                 | Spring             | 1            |                    | 47   | 1260790         | Anello seeger Øi 52  | Cirdlip            | 1            |                    |
| 6    | 2760400         | Pistone valvola       | Valve piston       | 1            |                    | 48   | 1780550         | Anello elastico      | Snap ring          | 1            |                    |
| 7    | 2260100         | OR Ø 6,02x2,62        | O-Ring             | 1            |                    | 49   | 2760340         | Cuscinetto           | Bearing            | 1            |                    |
| 8    | 660190          | OR Ø 6,07x1,78        | O-Ring             | 1            |                    | 50   | 880130          | Tappo olio           | Oil cap            | 1            |                    |
| 9    | 2760210         | Anello antiestrusione | Ring               | 1            |                    | 51   | 2760040         | Pistone              | Piston             | 3            |                    |
| 10   | 2760050         | Guida pistone         | Piston guide       | 1            |                    | 52   | 1780050         | Spinotto             | Piston pin         | 3            |                    |
| 11   | 1200690         | OR Ø 15,6x1,78        | O-Ring             | 4            |                    | 53   | 1780040         | Biella alluminio     | Alluminium con rod | 3            |                    |
| 12   | 394280          | OR Ø 12,42x1,78       | O-Ring             | 2            |                    | 54   | 2760280         | OR Ø 101,27x2,62     | O-Ring             | 1            |                    |
| 13   | 2260070         | Otturatore by pass    | By-pass jet        | 1            |                    | 55   | 802190          | Vite TE M 6x12       | Screw              | 4            |                    |
| 14   | 2760090         | Sede                  | Seat               | 1            |                    | 56   | 2760110         | Coperchio posteriore | Rear cover         | 1            |                    |
| 15   | 770140          | OR Ø 11,11x1,78       | O-Ring             | 1            |                    | 58   | 2760350         | Cuscinetto           | Bearing            | 1            |                    |
| 16   | 1982520         | Portagomma            | Hose tail          | 1            |                    | 59   | 1321080         | Anello elastico      | Snap ring          | 1            |                    |
| 17   | 480480          | OR Ø 4,48x1,78        | O-Ring             | 2            |                    | 62   | 2769200         | Prem. testa pompa    | Pump head pre-ass. | 1            |                    |
| 18   | 1250280         | Sfera                 | Ball               | 1            |                    | 64   | 480671          | Anello tenuta        | Seal               | 1            |                    |
| 19   | 1560520         | Molla                 | Spring             | 1            |                    | 66   | 180030          | Vite TCEI M 8x20     | Screw              | 4            |                    |
| 20   | 2760230         | Iniettore detergente  | Detergent injector | 1            |                    | 67   | 820440          | Grano M 6            | Grub screw         | 1            |                    |
| 21   | 2760270         | OR Ø 12x1             | O-Ring             | 1            |                    | 69   | 1780590         | Albero ecc. cavo     | Hollow shaft       | 1            | ○                  |
| 22   | 1470210         | OR Ø 9x1              | O-Ring             | 1            |                    |      | 1780600         | Albero ecc. cavo     | Hollow shaft       | 1            | ●                  |
| 23   | 2760120         | Inserto iniettore     | Injector insert    | 1            |                    | 70   | 1780580         | Flangia mot.scoppio  | Gas engine flange  | 1            | Type F 25          |
| 24   | 2760200         | Molla                 | Spring             | 1            |                    |      |                 |                      |                    |              |                    |
| 25   | 2760130         | Otturatore            | Jet                | 1            |                    |      |                 |                      |                    |              |                    |
| 26   | 1460430         | OR Ø 4x2,5            | O-Ring             | 1            |                    |      |                 |                      |                    |              |                    |
| 27   | 801080          | Vite TCEI M 6x50      | Screw              | 8            |                    |      |                 |                      |                    |              |                    |
| 28   | 1381550         | Rondella              | Washer             | 8            |                    |      |                 |                      |                    |              |                    |
| 29   | 2760020         | Testa                 | Head               | 1            |                    |      |                 |                      |                    |              |                    |
| 30   | 2760140         | Tappo ez-start        | Ez-start plug      | 1            |                    |      |                 |                      |                    |              |                    |
| 31   | 1982240         | Sfera                 | Ball               | 1            |                    |      |                 |                      |                    |              |                    |
| 32   | 1981800         | Molla                 | Spring             | 1            |                    |      |                 |                      |                    |              |                    |
| 33   | 2760260         | Tappo 1/4" G conico   | Plug               | 2            |                    |      |                 |                      |                    |              |                    |
| 34   | 2760180         | Tappo valvola         | Plug               | 3            |                    |      |                 |                      |                    |              |                    |
| 35   | 2769050         | Valvola completa      | Complete valve     | 6            |                    |      |                 |                      |                    |              |                    |
| 36   | 2760220         | Anello appoggio       | Support ring       | 3            |                    |      |                 |                      |                    |              |                    |
| 37   | 1342761         | Guarnizione           | Gasket             | 3            |                    |      |                 |                      |                    |              |                    |
| 38   | 1981580         | Anello antiestrusione | Ring               | 1            |                    |      |                 |                      |                    |              |                    |
| 39   | 1981570         | Guida pistone         | Piston guide       | 3            |                    |      |                 |                      |                    |              |                    |
| 40   | 770260          | OR Ø 23,52x1,78       | O-Ring             | 3            |                    |      |                 |                      |                    |              |                    |
| 41   | 1260440         | Guarnizione           | Gasket             | 3            |                    |      |                 |                      |                    |              |                    |
| 42   | 640070          | OR Ø 13,95x2,62       | O-Ring             | 3            |                    |      |                 |                      |                    |              |                    |

### KIT RICAMBI PART KITS

### LEGENDA :

| A=KIT 2186<br>valvole<br>valves |      | B=KIT 2187 ø 15<br>pistoni<br>pistons |      | C=KIT 2188<br>tenute olio<br>oil seals |      | D=KIT 2189 ø 15<br>tenute acqua<br>water seals |      |
|---------------------------------|------|---------------------------------------|------|--|------|--|------|
| pos.                            | Q.ty | pos.                                  | Q.ty | pos.                                   | Q.ty | pos.   | Q.ty |
| 35                              | 6    | 51                                    | 3    | 44                                     | 3    | 37   | 3    |
|                                 |      |                                       |      | 46                                     | 1    | 38   | 3    |
|                                 |      |                                       |      | 54                                     | 1    | 40   | 3    |
|                                 |      |                                       |      | 64                                     | 1    | 41   | 3    |
|                                 |      |                                       |      |  |      | 42   | 3    |

**Ø 15**  
○ Per / For  
RSV 2.5 G25

**Ø 15**  
● Per / For  
RSV 3 G25

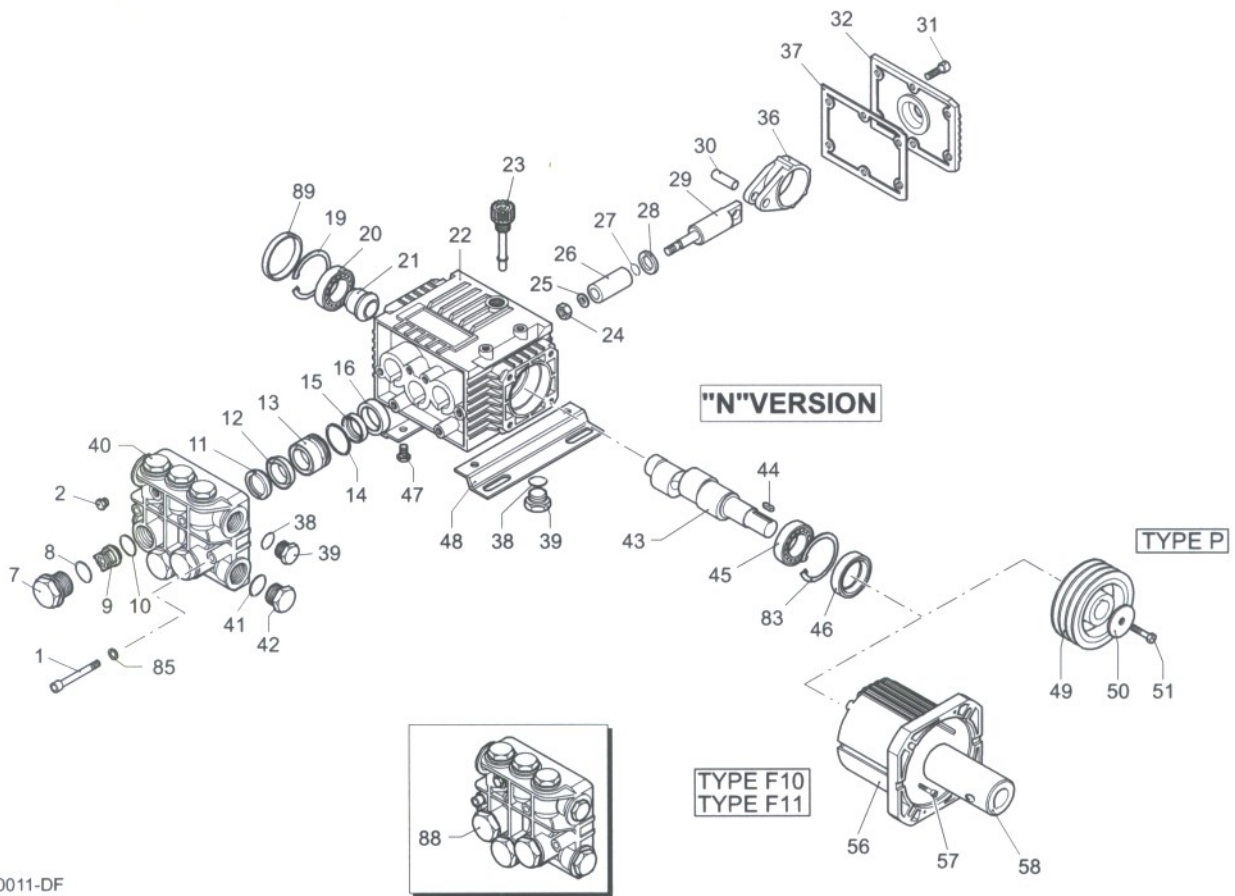
| E=KIT 2190<br>OR<br>O-Rings |      |      |      | F=KIT 2191 ø 15<br>anelli appoggio<br>support rings |      |      |      |
|-----------------------------|------|------|------|---|------|------|------|
| pos.                        | Q.ty | pos. | Q.ty | pos.  | Q.ty | pos. | Q.ty |
| 7                           | 1    | 17   | 2    | 36  | 3    |      |      |
| 8                           | 1    | 18   | 1    |   |      |      |      |
| 9                           | 1    | 19   | 1    |   |      |      |      |
| 11                          | 4    | 21   | 1    |   |      |      |      |
| 12                          | 2    | 22   | 1    |   |      |      |      |
| 15                          | 1    | 26   | 1    |   |      |      |      |

# Pump XT 13.15 for P2 & D1ES Mini Bowser

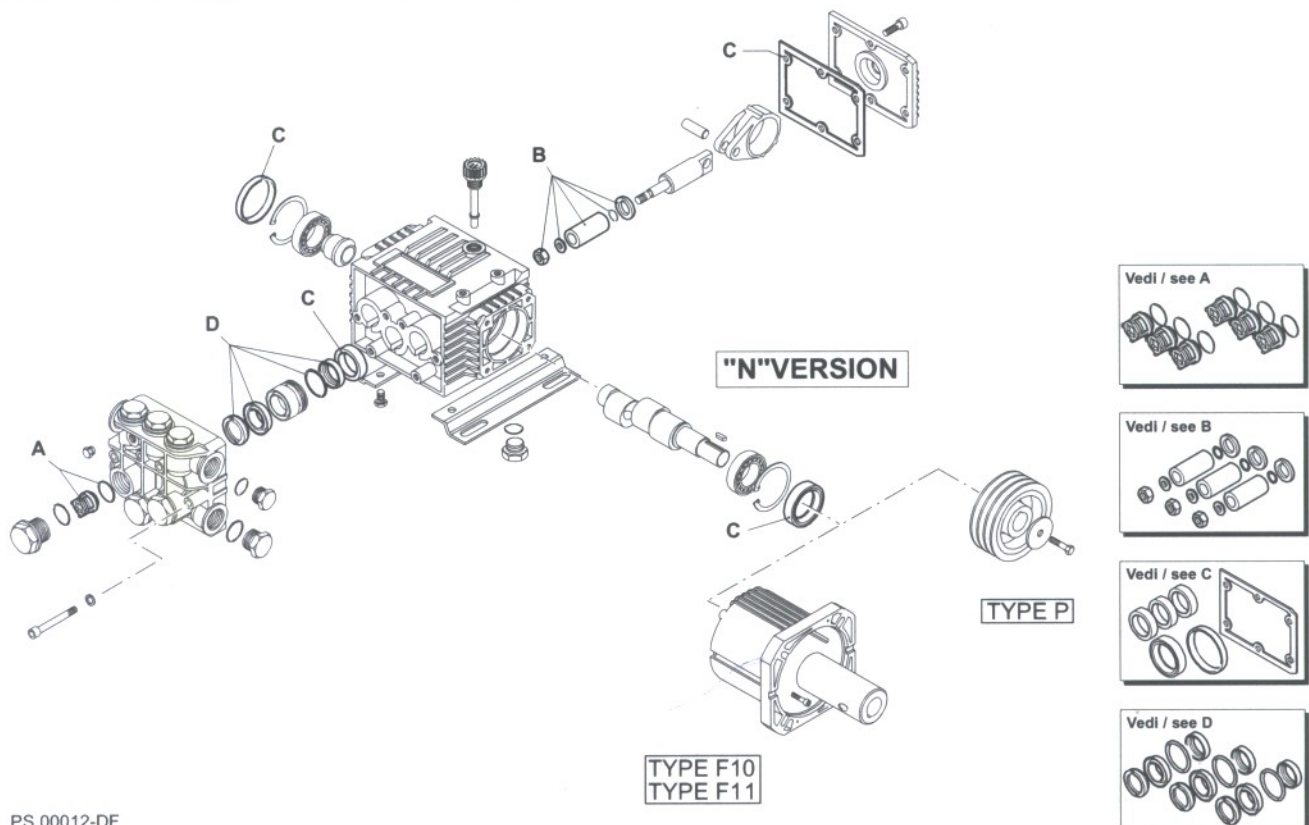
## Complete Pump: ARXT13.15

# XT

VERSION **N** 1450 RPM



## KIT RICAMBI / PART KITS



## Pump XT 13.15 for P2 & D1ES Mini Bowser

### Complete Pump: ARXT13.15

| XT 1450 |           |                |     |     |           |                   |     |
|---------|-----------|----------------|-----|-----|-----------|-------------------|-----|
| Pos     | Code No   | Description    | Qty | Pos | Code No   | Description       | Qty |
| 1       | AR1322730 | Screw          | 6   | 40  | AR1320020 | Pump Head         | 1   |
| 2       | AR620301  | Plug           | 1   | 41  | AR180101  | O Ring            | 1   |
| 7       | AR1260162 | Plug           | 6   | 42  | AR820361  | Plug              | 1   |
| 8       | AR960160  | O Ring         | 6   | 43  | AR1260200 | Crankshaft        | 1   |
| 9       | AR1269050 | Complete Valve | 6   | 43  | AR1320260 | Crankshaft        | 1   |
| 10      | AR880830  | O Ring         | 6   | 44  | AR1380520 | Key               | 1   |
| 11      | AR1320340 | Support Ring   | 3   | 45  | AR1320370 | Bearing           | 1   |
| 12      | AR1260220 | Gasket         | 3   | 46  | AR1260750 | Seal              | 1   |
| 13      | AR1320351 | Piston Guide   | 3   | 47  | AR1260470 | Screw             | 4   |
| 14      | AR1260420 | O Ring         | 3   | 48  | AR1263890 | Base              | 2   |
| 15      | AR1260450 | Gasket         | 3   | 83  | AR1260790 | Circlip           | 1   |
| 16      | AR1260460 | Seal           | 3   | 85  | AR1381550 | Washer            | 6   |
| 19      | AR1260790 | Circlip        | 1   | 88  | AR1269222 | Pump Head pre-ass | 1   |
| 20      | AR1320370 | Bearing        | 1   | 89  | AR1266740 | Cap               | 1   |
| 21      | AR1320330 | Bushing        | 1   |     |           |                   |     |
| 22      | AR1320010 | Pump Hous-     | 1   |     |           |                   |     |
| 23      | AR880130  | Oil Plug       | 1   |     |           |                   |     |
| 24      | AR1260110 | Nut            | 3   |     |           |                   |     |
| 25      | AR1260100 | Washer         | 3   |     |           |                   |     |
| 26      | AR1260210 | Piston         | 3   |     |           |                   |     |
| 27      | AR480480  | O Ring         | 3   |     |           |                   |     |
| 28      | AR1260091 | Spacer         | 3   |     |           |                   |     |
| 29      | AR1260070 | Guiding Pis-   | 3   |     |           |                   |     |
| 30      | AR1260080 | Piston Pin     | 3   |     |           |                   |     |
| 31      | AR1260760 | Screw          | 6   |     |           |                   |     |
| 32      | AR1269101 | Complete       | 1   |     |           |                   |     |
| 32      | AR1320910 | Complete       | 1   |     |           |                   |     |
| 36      | AR1260060 | Con Road       | 3   |     |           |                   |     |
| 36      | AR1320140 | Con Road       | 3   |     |           |                   |     |
| 37      | AR1260040 | Gasket         | 1   |     |           |                   |     |
| 38      | AR740290  | O Ring         | 2   |     |           |                   |     |
| 39      | AR1980740 | Plug           | 2   |     |           |                   |     |

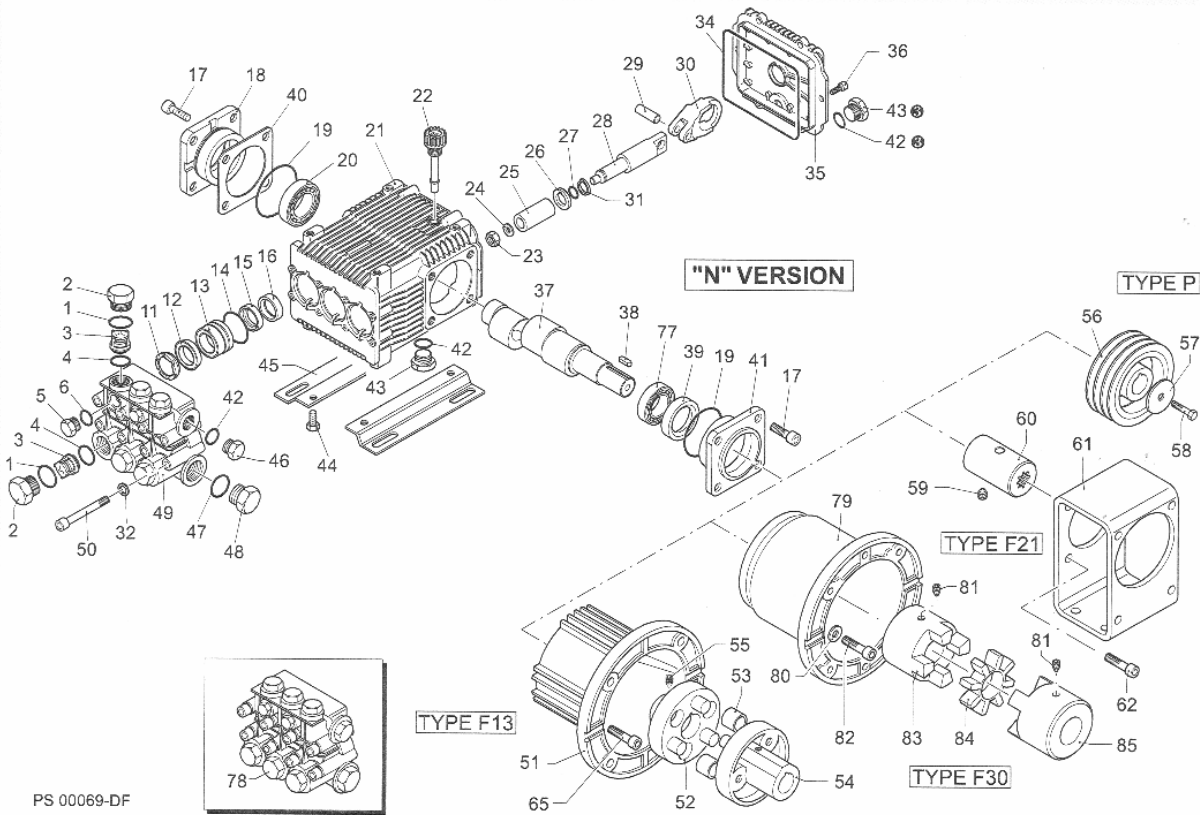
| ARKIT1874   |   |
|-------------|---|
| Water Seals |   |
| 11          | 3 |
| 12          | 3 |
| 14          | 3 |
| 15          | 3 |

| ARKIT1864 |     | ARKIT2629  |     | ARKIT1872    |     |
|-----------|-----|------------|-----|--------------|-----|
| Valve Kit |     | Piston Kit |     | Oil Seal Kit |     |
| Pos       | Qty | Pos        | Qty | Pos          | Qty |
| 9         | 6   | 24         | 3   | 16           | 3   |
| 10        | 6   | 25         | 3   | 37           | 1   |
|           |     | 26         | 3   | 46           | 1   |
|           |     | 27         | 3   | 89           | 1   |
|           |     | 28         | 3   |              |     |

# Pump RK 15.20 for P4 Mini Bowser

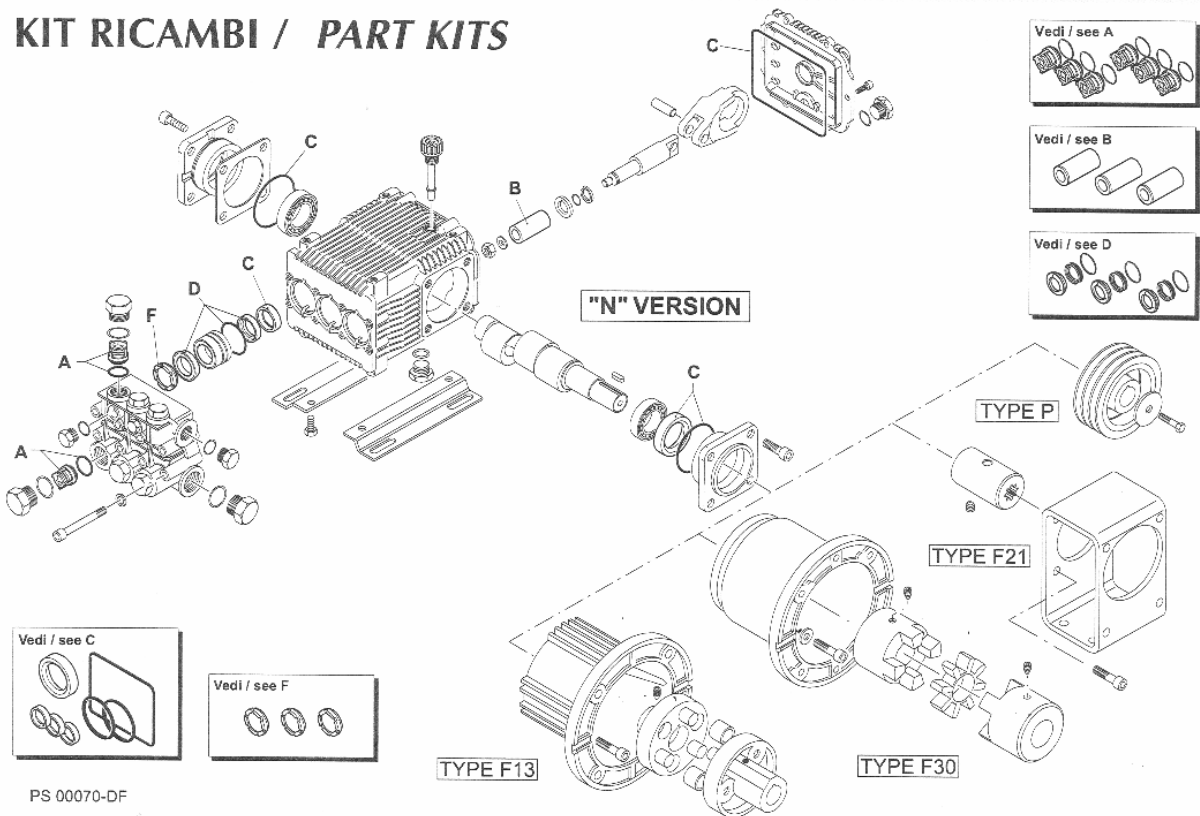
## Complete Pump: ARXR15-20H

**RK**      VERSION **N**      **1450** RPM



PS 00069-DF

### KIT RICAMBI / PART KITS



PS 00070-DF

# Pump RK 15.20 for P4 Mini Bowser

## Complete Pump: ARXR15-20H

**RK MODEL: 15.20H**

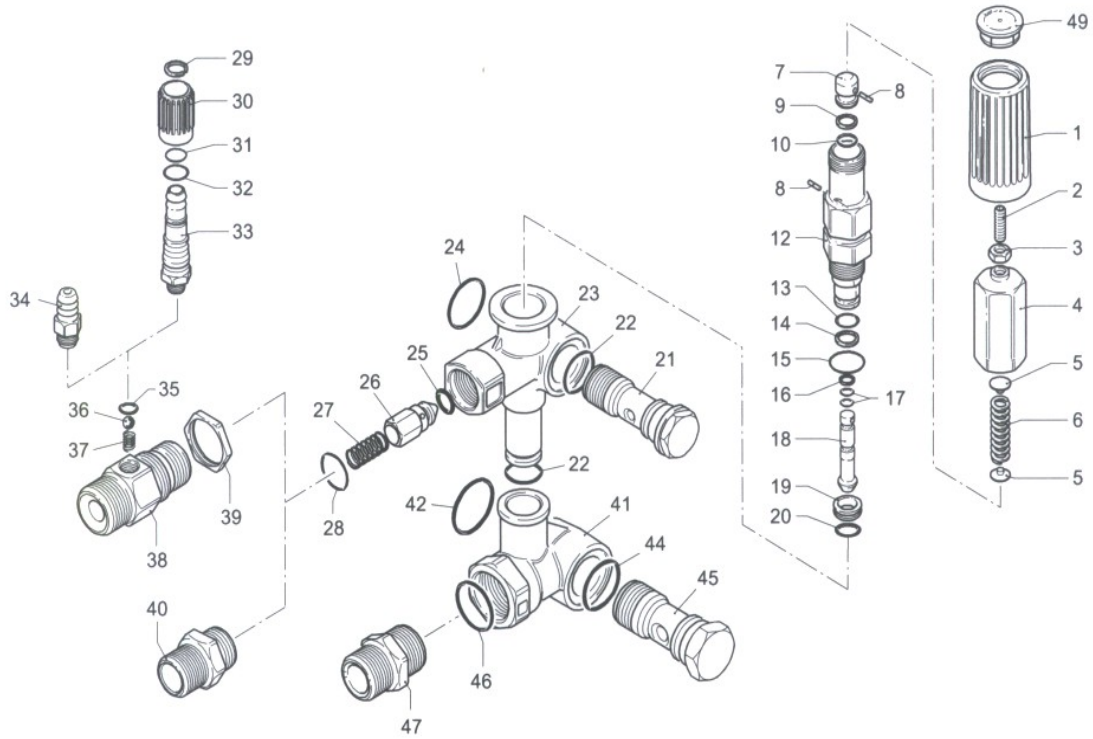
| Pos | Part No   | Description        | Qty | Pos | Part No   | Description        | Qty |
|-----|-----------|--------------------|-----|-----|-----------|--------------------|-----|
| 1   | AR960160  | O Ring             | 6   | 36  | AR1343510 | Screw              | 6   |
| 2   | AR960090  | Plug               | 6   | 40  | AR1380120 | 0.10mm shim        | 1+3 |
| 2   | AR1380740 | Plug               | 6   | 40  | AR1380130 | 0.20mm shim        | 1+3 |
| 3   | AR1389051 | Complete Valve     | 6   | 40  | AR1380530 | 0.25mm shim        | 1+3 |
| 4   | AR880830  | O Ring             | 6   | 40  | AR1382810 | 0.05mm shim        | 1+3 |
| 5   | AR880581  | Plug               | 2   | 42  | AR740290  | O ring             | 3   |
| 6   | AR820510  | O Ring             | 2   | 43  | AR1980740 | 3/8 G plug         | 2   |
| 11  | AR960110  | Support Ring       | 3   | 44  | AR1260470 | Screw              | 4   |
| 12  | AR880320  | Gasket             | 3   | 45  | AR1380141 | Base               | 2   |
| 13  | AR1380090 | Piston Guide       | 3   | 46  | AR1980740 | 3/8 G Plug         | 1   |
| 14  | AR961240  | O Ring             | 3   | 46  | AR1981180 | 3/8 G Plug         | 1   |
| 15  | AR880330  | Gasket             | 3   | 47  | AR180101  | O Ring             | 1   |
| 16  | AR138130  | Seal               | 3   | 48  | AR820361  | Plug               | 1   |
| 17  | AR850370  | Screw              | 8   | 48  | AR960870  | Plug               | 1   |
| 18  | AR1380050 | Closed Bearing sup | 1   | 78  | AR1389272 | Pump head Complete | 1   |
| 19  | AR640030  | O Ring             | 1   | 50  | AR820150  | Screw              | 8   |
| 20  | AR2280240 | Bearing            | 1   | 60  | AR1380320 | Bearing            | 1   |
| 21  | AR1382770 | Pump Housing       | 1   | 61  | AR621170  | Seal               | 1   |
| 22  | AR880130  | Oil Cap            | 1   | 62  | AR1380220 | O Ring             | 1   |
| 23  | AR962010  | Nut                | 3   | 63  | AR1380210 | Shaft cover        | 1   |
| 24  | AR962000  | Washer             | 3   | 66  | AR2280180 | Hollow Shaft 28mm  | 1   |
| 25  | AR1380940 | Ceramic Piston     | 3   | 66  | AR2280170 | Hollow Shaft 028mm | 1   |
| 26  | AR1380950 | Spacer             | 3   | 66  | AR2280160 | Hollow Shaft 028mm | 1   |
| 27  | AR600180  | O ring             | 3   | 66  | AR2280150 | Hollow Shaft 028mm | 1   |
| 28  | AR1380920 | Guiding Piston     | 3   | 67  | AR1380370 | EI Motor flange    | 1   |
| 29  | AR1380060 | Piston Pin         | 3   | 76  | AR620610  | Screw              | 4   |
| 30  | AR1383050 | Aluminium con-rod  | 3   | 86  | AR1260250 | Oil Indicator      | 1   |
| 31  | AR1080401 | Ring               | 3   | 87  | AR1260430 | Snap Ring          | 1   |
| 32  | AR1381850 | Washer             | 8   | 88  | AR1780690 | Disc               | 1   |
| 34  | AR1780510 | O Ring             | 1   | 89  | AR1140450 | O Ring             | 1   |
| 35  | AR1789010 | Complete cover     | 1   |     |           |                    |     |

| Valve Kit |     | Piston Kit |     | Oil Seal Kit |     |
|-----------|-----|------------|-----|--------------|-----|
| ARKIT1828 |     | ARKIT2757  |     | ARKIT1855    |     |
| Pos       | Qty | Pos        | Qty | Pos          | Qty |
| 3         | 6   | 25         | 3   | 16           | 3   |
| 4         | 6   |            |     | 19           | 1   |
|           |     |            |     | 34           | 1   |
|           |     |            |     | 61           | 1   |
|           |     |            |     | 62           | 1   |

| Water Seal |     | Support Ring |     |
|------------|-----|--------------|-----|
| ARKIT1857  |     | ARKIT1829    |     |
| Pos        | Qty | Pos          | Qty |
| 12         | 3   | 11           | 3   |
| 14         | 3   |              |     |
| 15         | 3   |              |     |

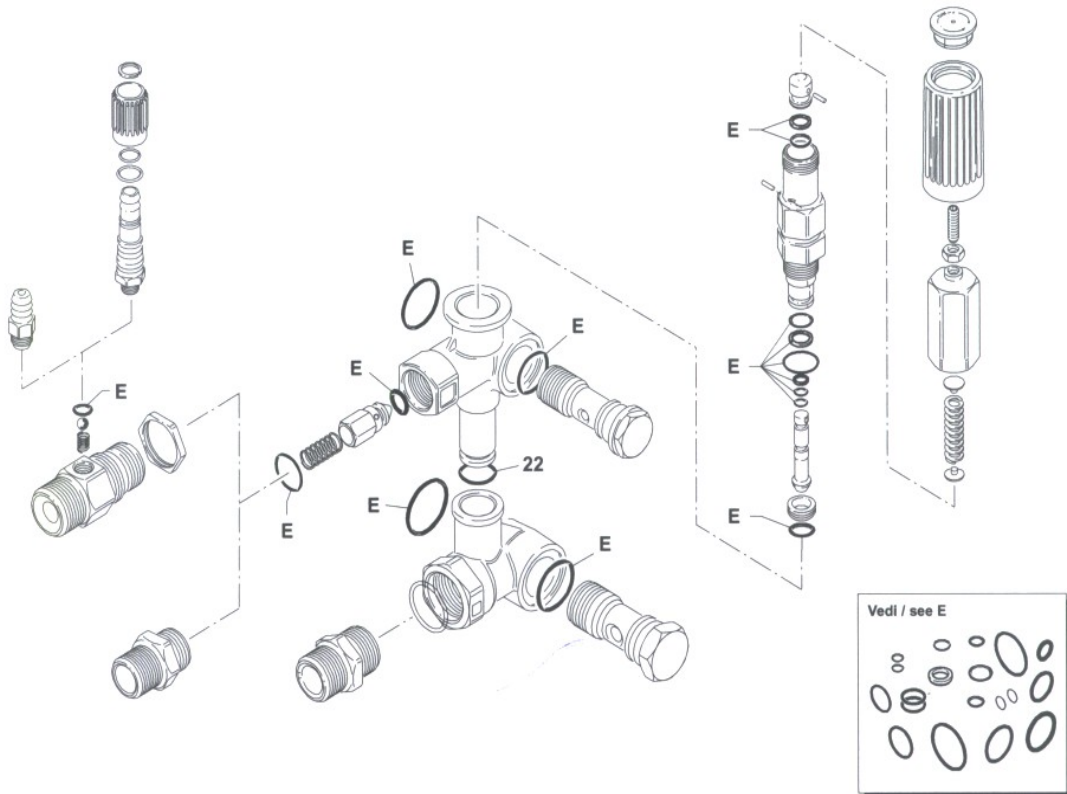
# Unloader for P2 & D1ES Mini Bowser Complete Unloader: ARMM4B/C

## MINIMATIC 4/B



UN000186-HF

## KIT RICAMBI / PART KITS



UN000187-HF

# Unloader for P2 & D1ES Mini Bowser

## Complete Unloader: ARMM4B/C

# MINIMATIC 4/B



| Pos. | Cod.<br>Part n° | Denominazione     | Description         | Q.tà<br>Q.ty | Note<br>Vedi / See | Pos. | Cod.<br>Part n° | Denominazione   | Description      | Q.tà<br>Q.ty | Note<br>Vedi / See |
|------|-----------------|-------------------|---------------------|--------------|--------------------|------|-----------------|-----------------|------------------|--------------|--------------------|
| 1    | 1981780         | Manopola          | Handle              | 1            |                    | 40   | 1540180         | Niples 3/8" G   | Adaptor 3/8" G   | 1            | ●                  |
| 2    | 1540560         | Grano M6x20       | Grub                | 1            |                    |      | 1540500         | Niples 3/8" NPT | Adaptor 3/8" NPT | 1            | ●                  |
| 3    | 1980300         | Dado M6           | Nut                 | 1            |                    | 41   | 1540280         | Corpo by-pass   | By-pass housing  | 1            | 3/8" G             |
| 4    | 1980390         | Inserito manopola | Knob insert         | 1            |                    |      | 1540480         | Corpo by-pass   | By-pass housing  | 1            | 3/8" NPT           |
| 5    | 1980220         | Piattello molla   | Spring plate        | 2            |                    | 42   | 1540630         | OR Ø 23,47x2,62 | O-Ring           | 1            |                    |
| 6    | 1271070         | Molla             | Spring              | 1            |                    | 44   | 880270          | OR Ø 17,17x1,78 | O-Ring           | 1            |                    |
| 7    | 1080041         | Pistone superiore | Upper piston        | 1            |                    | 45   | 1540260         | Vite 1/2" G     | Thread screw     | 1            |                    |
| 8    | 1080070         | Spina             | Pin                 | 2            |                    | 46   | 480440          | OR Ø 17,13x2,62 | O-Ring           | 1            | Optional           |
| 9    | 1080401         | Anello antiest.   | Back-up ring        | 1            |                    | 47   | 1540050         | Raccordo        | Fitting          | 1            | Optional           |
| 10   | 1080250         | OR Ø 7,66x1,78    | O-Ring              | 1            |                    | 49   | 1981770         | Tappo manopola  | Knob plug        | 1            |                    |
| 12   | 1980210         | Guida pistone     | Piston Guide        | 1            |                    |      |                 |                 |                  |              |                    |
| 13   | 740290          | OR Ø 14x1,78      | O-Ring              | 1            |                    |      |                 |                 |                  |              |                    |
| 14   | 800560          | OR Ø 8,73x1,78    | O-Ring              | 1            |                    |      |                 |                 |                  |              |                    |
| 15   | 880830          | OR Ø 15,54x2,62   | O-Ring              | 1            |                    |      |                 |                 |                  |              |                    |
| 16   | 1271170         | Anello antiest.   | Back-up ring        | 1            |                    |      |                 |                 |                  |              |                    |
| 17   | 1080190         | OR Ø 2,90x1,78    | O-Ring              | 2            |                    |      |                 |                 |                  |              |                    |
| 18   | 1271160         | Pistone inferiore | Lower piston        | 1            |                    |      |                 |                 |                  |              |                    |
| 19   | 1980200         | Sede valvola      | Valve seat          | 1            |                    |      |                 |                 |                  |              |                    |
| 20   | 1470210         | OR Ø 9x1          | O-Ring              | 1            |                    |      |                 |                 |                  |              |                    |
| 21   | 1540270         | Vite 3/8" G       | Thread screw        | 1            | Ottone/Brass       |      |                 |                 |                  |              |                    |
|      | 1540430         | Vite 3/8" G Inox  | Thread screw        | 1            | Inox/Steel         |      |                 |                 |                  |              |                    |
| 22   | 390080          | OR Ø 11,91x2,62   | O-Ring              | 2            |                    |      |                 |                 |                  |              |                    |
| 23   | 1540510         | Corpo valvola     | Valve housing       | 1            |                    |      |                 |                 |                  |              |                    |
| 24   | 1140450         | OR Ø 20,24x2,62   | O-Ring              | 1            |                    |      |                 |                 |                  |              |                    |
| 25   | 1460430         | OR Ø 4x2,5        | O-Ring              | 1            |                    |      |                 |                 |                  |              |                    |
| 26   | 1540170         | Otturatore        | Jet                 | 1            |                    |      |                 |                 |                  |              |                    |
| 27   | 1080091         | Molla             | Spring              | 1            |                    |      |                 |                 |                  |              |                    |
| 28   | 394280          | OR Ø 12,42x1,78   | O-Ring              | 1            |                    |      |                 |                 |                  |              |                    |
| 29   | 1560660         | Anello            | Ring                | 1            | ▲                  |      |                 |                 |                  |              |                    |
| 30   | 1560680         | Manopola reg.det. | Detergent reg. knob | 1            | ▲                  |      |                 |                 |                  |              |                    |
| 31   | 480560          | OR Ø 6,75x1,78    | O-Ring              | 1            | ▲                  |      |                 |                 |                  |              |                    |
| 32   | 800560          | OR Ø 8,73x1,78    | O-Ring              | 1            | ▲                  |      |                 |                 |                  |              |                    |
| 33   | 1560650         | Portagomma        | Hose tail           | 1            | ▲                  |      |                 |                 |                  |              |                    |
| 34   | 1560490         | Portagomma        | Hose tail           | 1            | ■                  |      |                 |                 |                  |              |                    |
| 35   | 480480          | OR Ø 4,48x1,78    | O-Ring              | 1            | ■▲                 |      |                 |                 |                  |              |                    |
| 36   | 1250280         | Sfera             | Ball                | 1            | ■▲                 |      |                 |                 |                  |              |                    |
| 37   | 1560520         | Molla             | Spring              | 1            | ■▲                 |      |                 |                 |                  |              |                    |
|      | 1540570         | Raccordo 3/8" G   | Fitting 3/8" G      | 1            | Ø 2 ■▲             |      |                 |                 |                  |              |                    |
|      | 1540580         | Raccordo 3/8" G   | Fitting 3/8" G      | 1            | Ø 2,3 ■▲           |      |                 |                 |                  |              |                    |
|      | 1540610         | Raccordo 3/8" NPT | Fitting 3/8" NPT    | 1            | Ø 2 ■▲             |      |                 |                 |                  |              |                    |
|      | 1540620         | Raccordo 3/8" NPT | Fitting 3/8" NPT    | 1            | Ø 2,3 ■▲           |      |                 |                 |                  |              |                    |
| 38   | 1540300         | Controdado        | Nut                 | 1            | ■▲                 |      |                 |                 |                  |              |                    |

### KIT RICAMBI PART KITS

E=KIT 2812  
OR  
O-Rings

| pos. | Q.ty | pos. | Q.ty | pos. | Q.ty | pos. | Q.ty |
|------|------|------|------|------|------|------|------|
| 9    | 1    | 17   | 2    | 35   | 1    |      |      |
| 10   | 1    | 20   | 1    | 42   | 1    |      |      |
| 13   | 1    | 22   | 2    | 44   | 1    |      |      |
| 14   | 1    | 24   | 1    |      |      |      |      |
| 15   | 1    | 25   | 1    |      |      |      |      |
| 16   | 1    | 28   | 1    |      |      |      |      |

| pos. | Q.ty | pos. | Q.ty | pos. | Q.ty | pos. | Q.ty |
|------|------|------|------|------|------|------|------|
|      |      |      |      |      |      |      |      |
|      |      |      |      |      |      |      |      |

### LEGENDA :

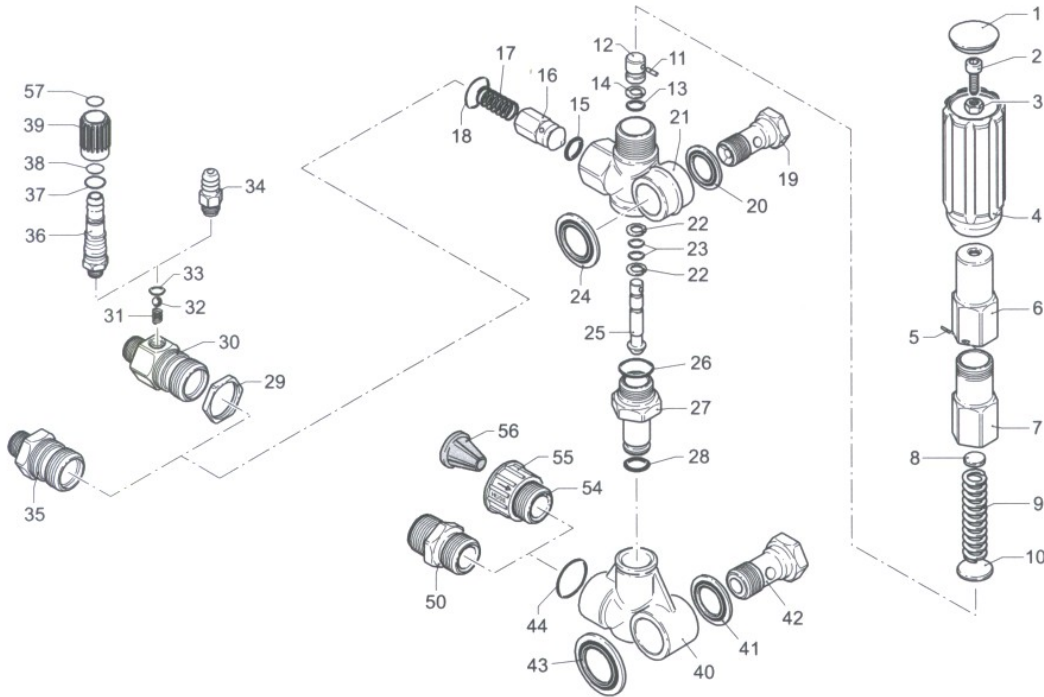
● Per / For  
MINIMATIC 4/B

■ Per / For  
MINIMATIC 4/B+ID

▲ Per / For  
MINIMATIC 4/B+IDR

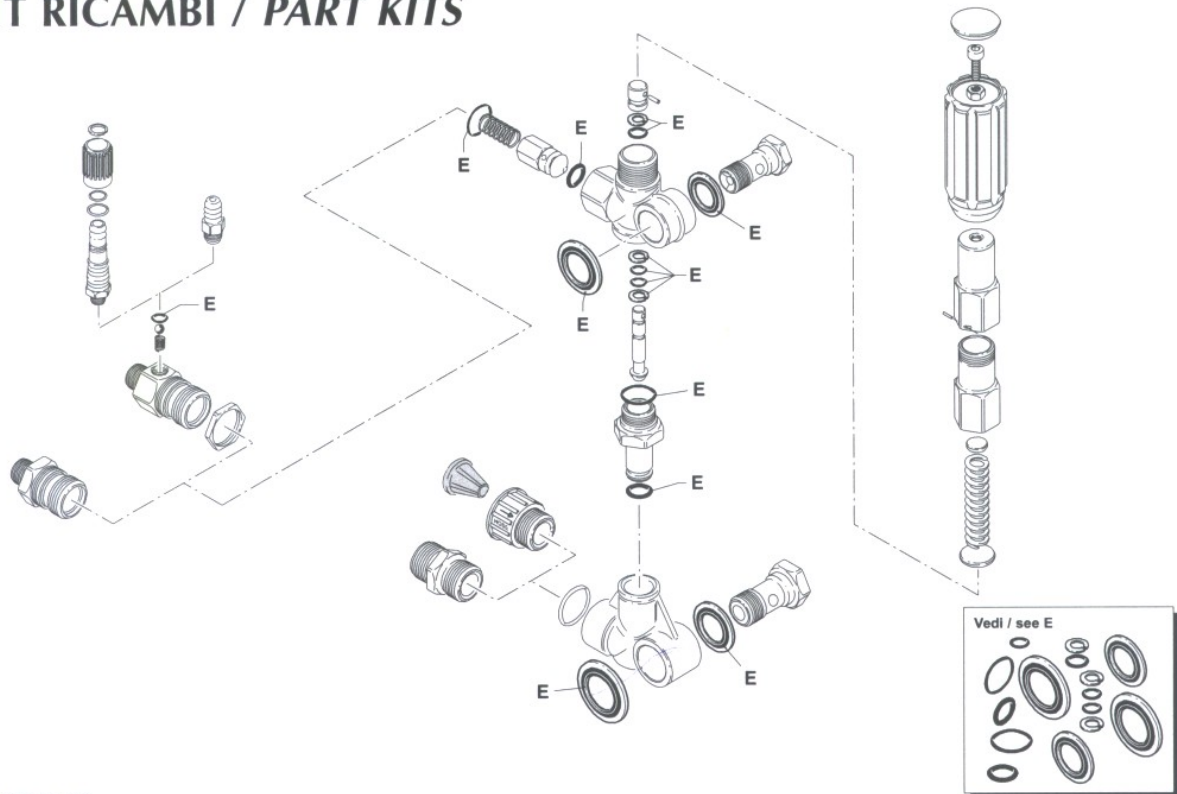
# Unloader for P4 Mini-Bowser Complete Unloader: ARGM3B250

## GYMATIC 3/B



UN000190-HF

## KIT RICAMBI / PART KITS



UN000191-HF

## Unloader for P4 Mini-Bowser Complete Unloader: ARGM3B250

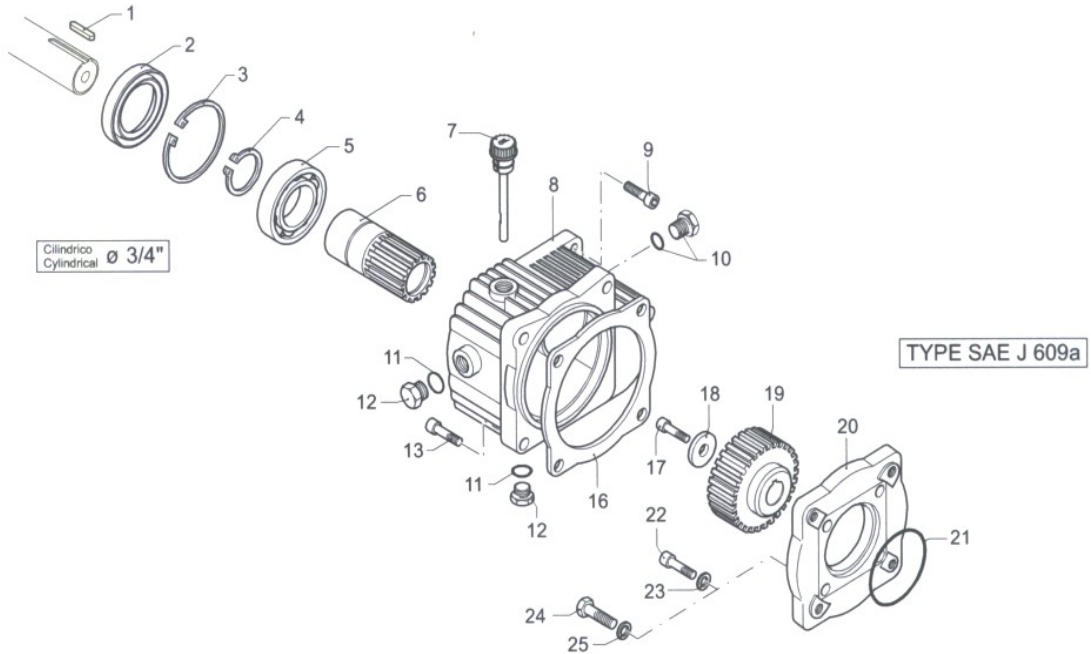
| GYMATIC 3B |           |                     |     |     |           |                 |     |
|------------|-----------|---------------------|-----|-----|-----------|-----------------|-----|
| Pos        | Part No   | Description         | Qty | Pos | Part No   | Description     | Qty |
| 1          | AR1560580 | Knob Plug           | 1   | 40  | AR1540020 | Suction Fitting | 1   |
| 2          | AR540290  | Screw               | 1   | 41  | AR1540120 | Washer          | 1   |
| 3          | AR1660210 | Nut                 | 1   | 42  | AR1540090 | ½" G Fitting    | 1   |
| 4          | AR1560400 | Handle              | 1   | 42  | AR1540200 | Fitting ½" NPT  | 1   |
| 5          | AR1080070 | Pin                 | 1   | 43  | AR1560290 | Washer          | 1   |
| 6          | AR1560420 | Adjusting Screw     | 1   | 44  | AR480440  | O Ring          | 1   |
| 7          | AR1560410 | Spring Guide        | 1   | 50  | AR1540050 | ½" Gas Fitting  | 1   |
| 8          | AR1560440 | Plate               | 1   | 54  | AR1560310 | Fitting         | 1   |
| 9          | AR1560350 | Spring              | 1   | 55  | AR1560300 | Ring Nut        | 1   |
| 10         | AR1080610 | Spring Plate        | 1   | 56  | AR1266330 | Filter          | 1   |
| 11         | AR1080660 | Pin                 | 1   |     |           |                 |     |
| 12         | AR1080540 | Upper Piston        | 1   |     |           |                 |     |
| 13         | AR391000  | O Ring              | 1   |     |           |                 |     |
| 14         | AR1080640 | Back up Ring        |     |     |           |                 |     |
| 15         | AR1560150 | O Ring              |     |     |           |                 |     |
| 16         | AR1560100 | Jet                 |     |     |           |                 |     |
| 17         | AR1560140 | Spring              |     |     |           |                 |     |
| 18         | AR180101  | O Ring              |     |     |           |                 |     |
| 19         | AR1540190 | Fitting 3/8" NPT    | 1   |     |           |                 |     |
| 21         | AR1560010 | Valve Housing       | 1   |     |           |                 |     |
| 22         | AR1080550 | Back up Ring        | 2   |     |           |                 |     |
| 23         | AR480480  | O Ring              | 2   |     |           |                 |     |
| 24         | AR1560280 | Washer              | 1   |     |           |                 |     |
| 25         | AR1560320 | Lower Piston        | 1   |     |           |                 |     |
| 26         | AR880270  | O Ring              | 1   |     |           |                 |     |
| 27         | AR1560051 | By pass adaptor     | 1   |     |           |                 |     |
| 28         | AR390080  | O Ring              | 1   |     |           |                 |     |
| 29         | AR1560510 | Nut                 | 1   |     |           |                 |     |
| 30         | AR1560530 | Fitting G TSS       | 1   |     |           |                 |     |
| 30         | AR1560500 | Fitting F           | 1   |     |           |                 |     |
| 31         | AR1560520 | Spring              | 1   |     |           |                 |     |
| 32         | AR1250280 | Ball                | 1   |     |           |                 |     |
| 33         | AR480480  | O Ring              | 1   |     |           |                 |     |
| 34         | AR1560490 | Hose Tail           | 1   |     |           |                 |     |
| 35         | AR1560110 | Fitting ½" G 3/8" G | 1   |     |           |                 |     |
| 35         | AR1560111 | Fitting ½" G 3/8" G | 1   |     |           |                 |     |

F = ARKIT 2611

| Pos | Qty | Pos | Qty |
|-----|-----|-----|-----|
| 13  | 1   | 24  | 1   |
| 14  | 1   | 26  | 1   |
| 15  | 1   | 28  | 2   |
| 18  | 1   | 33  | 1   |
| 22  | 2   | 41  | 1   |
| 23  | 2   | 43  | 1   |

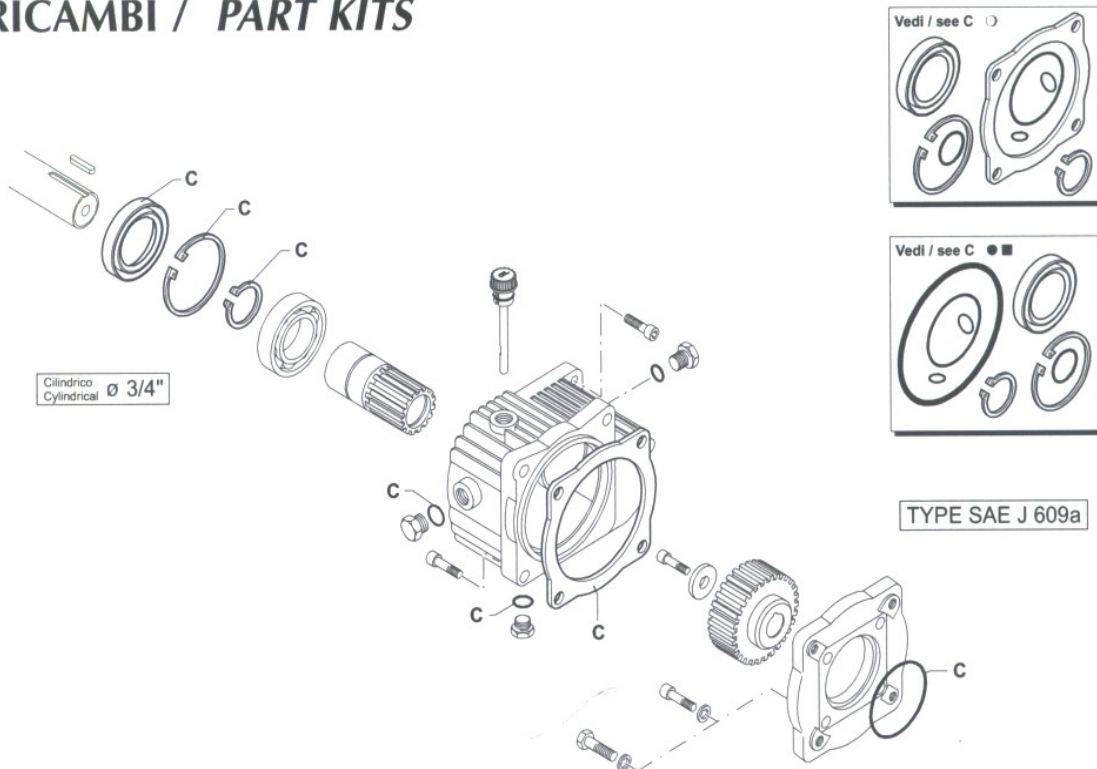
# Gearbox for P2 & D1ES Mini-Bowser Complete Gearbox: ARCRXT

## CR RIDUTTORE - GEAR BOX



UN000228-HF

### KIT RICAMBI / PART KITS

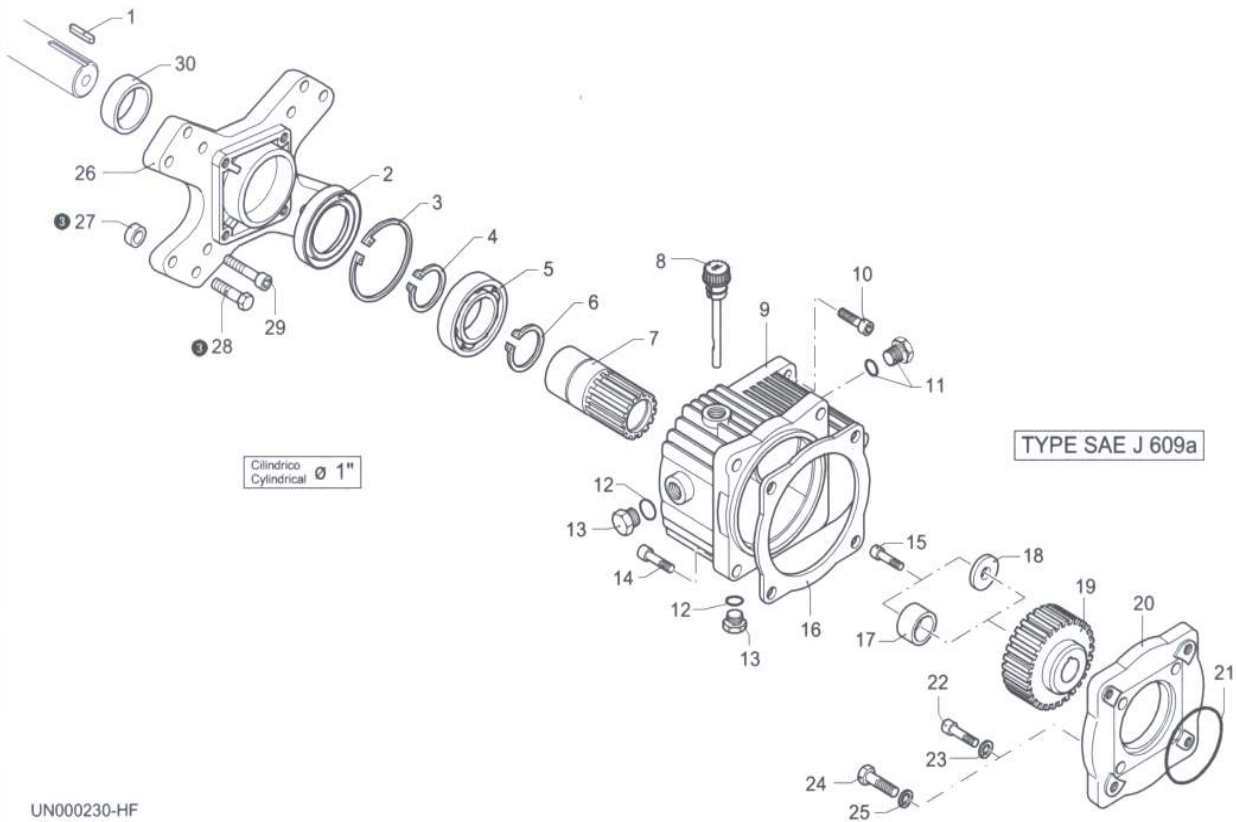


UN000229-HF

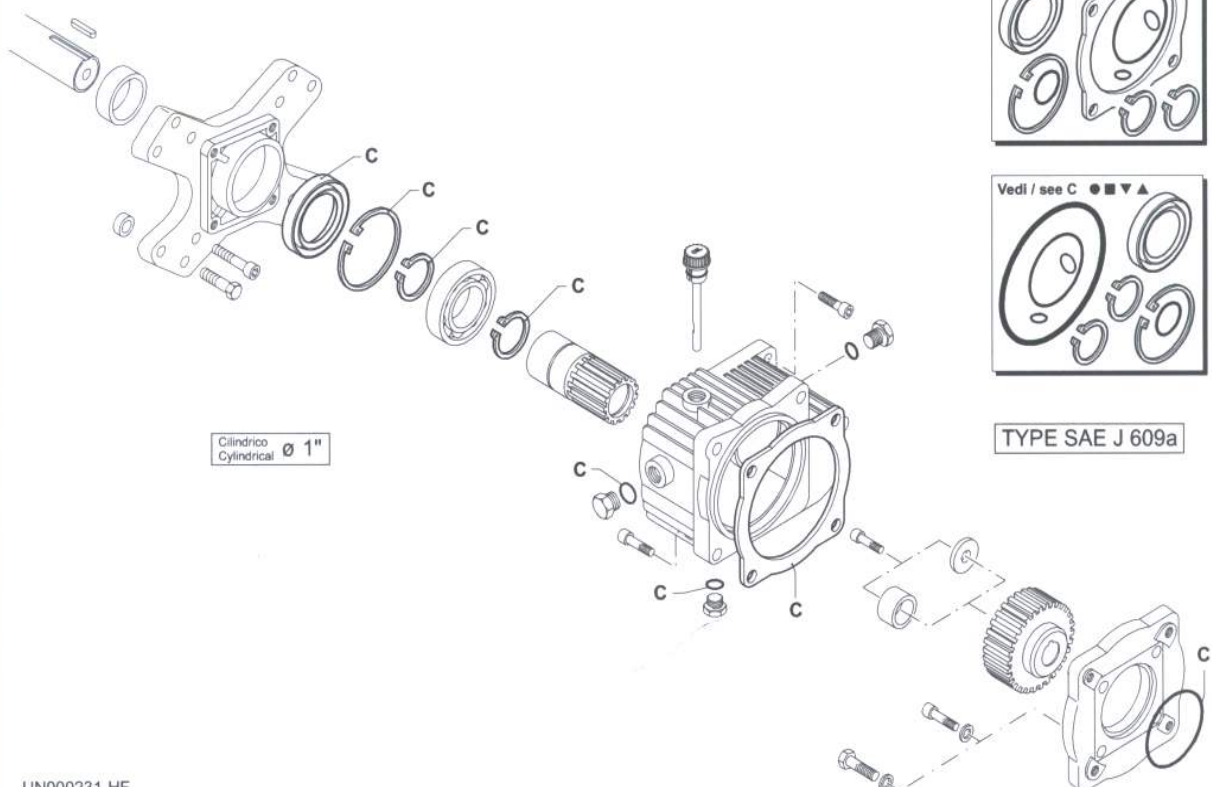


# Gearbox for P4 Mini-Bowser Complete Gearbox: ARCRXR

## CR RIDUTTORE - GEAR BOX



## KIT RICAMBI / PART KITS



# Gearbox for P4 Mini-Bowser Complete Gearbox: ARCRXR

## CR RIDUTTORE - GEAR BOX



| Pos. | Cod. Part n° | Denominazione       | Description       | Q.tà Q.ty | Note Vedi / See | Pos. | Cod. Part n° | Denominazione | Description | Q.tà Q.ty | Note Vedi / See |
|------|--------------|---------------------|-------------------|-----------|-----------------|------|--------------|---------------|-------------|-----------|-----------------|
| 1    | 1382510      | Chiavetta (8 HP)    | Key               | 1         | ○ ● ■ ▼ ▲       |      |              |               |             |           |                 |
|      | 881090       | Linguetta (9-18 HP) | Key               | 1         | ● ■ ▼ ▲         |      |              |               |             |           |                 |
| 2    | 961800       | Anello tenuta       | Seal              | 1         |                 |      |              |               |             |           |                 |
| 3    | 961790       | Seeger Øi 68        | Circlip           | 1         |                 |      |              |               |             |           |                 |
| 4    | 320240       | Seeger Øe 40        | Circlip           | 1         |                 |      |              |               |             |           |                 |
| 5    | 961781       | Cuscinetto          | Bearing           | 1         |                 |      |              |               |             |           |                 |
| 6    | 320240       | Seeger Øe 40        | Circlip           | 1         | ■ ▲             |      |              |               |             |           |                 |
| 7    | 1382420      | Pignone Ø 1" Z=23   | Pinion            | 1         | ○ ● ▼           |      |              |               |             |           |                 |
|      | 1382430      | Pignone Ø 1" Z=21   | Pinion            | 1         | ■ ▲             |      |              |               |             |           |                 |
| 8    | 1140370      | Tappo olio + OR     | Oil plug + O-ring | 1         |                 |      |              |               |             |           |                 |
| 9    | 1320910      | Scatola riduttore   | Gear box          | 1         |                 |      |              |               |             |           |                 |
| 10   | 881940       | Vite TCEI M 8x25    | Screw             | 4         |                 |      |              |               |             |           |                 |
| 11   | 1980290      | Tappo 3/8"          | Plug              | 1         |                 |      |              |               |             |           |                 |
| 12   | 740290       | OR Ø 14x1,78        | O-Ring            | 2         |                 |      |              |               |             |           |                 |
| 13   | 1980740      | Tappo 3/8"G         | Plug              | 2         | Ottone/Brass    |      |              |               |             |           |                 |
| 14   | 160671       | Vite TCEI M 10x25   | Screw             | 4         |                 |      |              |               |             |           |                 |
| 15   | 880280       | Vite TCEI M 6x18    | Screw             | 1         |                 |      |              |               |             |           |                 |
| 16   | 1320990      | Guarnizione scatola | Gasket            | 1         | ○               |      |              |               |             |           |                 |
|      | 1520590      | OR Ø 107,67x1,78    | O-Ring            | 1         | ● ■ ▼ ▲         |      |              |               |             |           |                 |
| 17   | 1940500      | Distanziale         | Spacer            | 1         | ▼ ▲             |      |              |               |             |           |                 |
| 18   | 780230       | Rondella Tenuta     | Washer            | 1         | ○ ● ■           |      |              |               |             |           |                 |
| 19   | 1322940      | Ruota dentata Z=45  | Gear              | 1         | ○               |      |              |               |             |           |                 |
|      | 1321230      | Ruota dentata Z=45  | Gear              | 1         | ● ▼             |      |              |               |             |           |                 |
| 20   | 1320960      | Ruota dentata Z=47  | Gear              | 1         | ■ ▲             |      |              |               |             |           |                 |
|      | 1320920      | Flangia riduttore   | Flange            | 1         | ○               |      |              |               |             |           |                 |
| 21   | 1320930      | Flangia riduttore   | Flange            | 1         | ● ■ ▼ ▲         |      |              |               |             |           |                 |
|      | 650920       | OR Ø 53,65x2,62     | O-Ring            | 1         | ○               |      |              |               |             |           |                 |
| 22   | 640030       | OR Ø 60x2,62        | O-Ring            | 1         | ● ■ ▼ ▲         |      |              |               |             |           |                 |
|      | 780330       | Vite TCEI M 6x20    | Screw             | 4         | ○               |      |              |               |             |           |                 |
| 23   | 1341020      | Rondella 6x10x1     | Washer            | 4         | ○               |      |              |               |             |           |                 |
| 24   | 180430       | Vite TE M 8x20      | Screw             | 4         | ● ■ (XM)        |      |              |               |             |           |                 |
|      | 390450       | Vite TE M 8x30      | Screw             | 4         | ● ■ ▼ ▲         |      |              |               |             |           |                 |
| 25   | 1260100      | Rondella 8x13x0,50  | Washer            | 4         | ● ■ ▼ ▲         |      |              |               |             |           |                 |
| 26   | 1320940      | Flangia motore      | Motor flange      | 1         |                 |      |              |               |             |           |                 |
| 27   | 961770       | Distanziale         | Spacer            | 4         | ③               |      |              |               |             |           |                 |
| 28   | 961900       | Vite TE 3/8"        | Screw             | 4         | ③               |      |              |               |             |           |                 |
| 29   | 651000       | Vite TCEI 5/16"     | Screw             | 4         |                 |      |              |               |             |           |                 |
| 30   | 1382540      | Distanziale         | Spacer            | 1         | ● ■ ▼ ▲         |      |              |               |             |           |                 |

③ Per motori italiani / Italian engines only

### KIT RICAMBI PART KITS

| C=KIT 2793 ○<br>tenute olio<br>oil seals |      |      |      | C=KIT 2525 ● ■ ▼ ▲<br>tenute olio<br>oil seals |      |      |      |
|--|------|------|------|--|------|------|------|
| pos.                                     | Q.ty | pos. | Q.ty | pos.   | Q.ty | pos. | Q.ty |
| 2  | 1    | 21   | 1    | 2  | 1    | 21   | 1    |
| 3  | 1    |      |      | 3  | 1    |      |      |
| 4  | 1    |      |      | 4  | 1    |      |      |
| 6  | 1    |      |      | 6  | 1    |      |      |
| 12                                       | 2    |      |      | 12   | 2    |      |      |
| 16                                       | 1    |      |      | 16   | 1    |      |      |

| pos. | Q.ty | pos. | Q.ty | pos. | Q.ty | pos. | Q.ty |
|------|------|------|------|------|------|------|------|
|      |      |      |      |      |      |      |      |

### LEGENDA :

● Per / For  
COD. 1690  
1:2  
XM/XMA series  
XRC/XRCAseries

■ Per / For  
COD. 1689  
1:2,24  
XM series  
XRC series

▼ Per / For  
COD. 1697  
1:2  
XW/XWA series

▲ Per / For  
COD. 1698  
1:2,24  
XW series

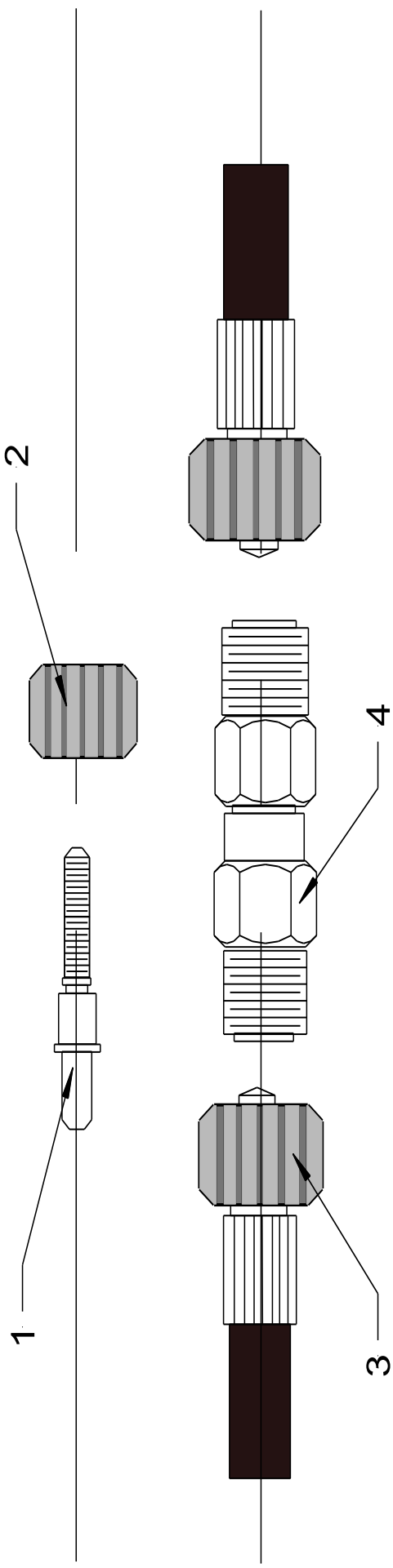
○ Per / For  
COD. 1693  
1:2,24  
XT/XTA series

# Cold Water Lance



| Pos | Part No      | Description       | Qty |
|-----|--------------|-------------------|-----|
| 1   | N26001/15045 | Nozzle            | 1   |
| 2   | MTM90040     | Adjustable Nozzle | 1   |
| 3   | DEM10031B    | QR Lance          | 1   |
| 4   | DEM10030     | QR Trigger        | 1   |
| 5   | MTM70012     | MVG Coupling      | 1   |

# High Pressure Hoses



|                                 |                    |                       |
|---------------------------------|--------------------|-----------------------|
| 1.                              | Hose Insert        | MV00490 (items 1 & 2) |
| 2.                              | Nut                |                       |
| 3.                              | High Pressure Hose | HH0030MVG             |
| 4.                              | Hose Joiner        | MV00500               |
| <b>Alternative Hose Lengths</b> |                    |                       |
|                                 | 15 Metre           | HH0050MVG             |
|                                 | 30 Metre           | HH00100MVG            |



# Warranty

This warranty covers the cost of all replacement parts and labour charges incurred, but does not cover the cost of transport or carriage. It is the owners responsibility to return the machine to a service depot or pay the travelling expenses of a engineer to attend. Demon Internationals

decision in warranty matters is final and binding.

Demon International Ltd, undertake to repair or replace at their discretion, any component which may fail due to a manufacturing fault within a period of 12months from the date of purchase, provided that any fault or damage was not sustained by;

- A Lack of regular and proper maintenance, user negligence, misuse, or damage caused by ice or frost.
- B The effects of contaminated fuel or water, the use of non-approved chemicals, or an insufficient or unsuitable electrical supply.
- C The effects of un-authorized modification and use.
- D Compression damage to high pressure hose. ( Hoses are warranted for one month only)
- E Worn out items considered wear and tear.

Parts which may or may not wear out during the first year and which are considered service items which will need replacing from time to time: High pressure nozzle, lance, trigger, hoses, fuel nozzle, fuel filter, piston seals, valves, unloader seats and seals, water filter, non-return valve, chemical barbs, chemical pipes, and pump oil seals.

It is the owners responsibility to ensure the pressure washer is kept in a safe and suitable environment and any faults reported by operatives to be rectified at the earliest possible date.

It is the operators responsibility to check the pressure washer for any faults and report them immediately, and to use the pressure washer in accordance with the manufacturers specifications and guidelines.

Demon International Ltd, undertake to use the highest quality components available during manufacture, but can not be held responsible for any undue consequence arising from the use of their pressure washers.

This warranty is given the original purchaser only and is not transferable without the fully authorized and written consent of Demon International Ltd.

The 3 Year Structural Warranty refers to all Demon fabricated structural parts, but this does exclude the Boiler coil.



# Warranty Procedure

## End Users

### **If your machine develops a problem:**

1. Phone Demon for advice with the model and serial number to hand.
2. Describe fully the problem as best you can.
3. If the problem cannot be resolved over the phone then the machine can be booked in for repair and if the faults are covered by the warranty the repair will be carried out free of charge.
4. If you cannot bring the machine in for repair then we will despatch an engineer. If the fault is covered by the warranty then we will not charge for labour or spares used, however the transport charge will be payable weather or not the repair is warranty.

## Hire Centres and Dealers

### **If your machine develops a problem:**

1. Phone Demon for advice with the model and serial number to hand.
2. Describe fully the problem.
3. We will advise you on the best course of action, however if parts are required you must raise a purchase order number to cover the parts. When the parts are fitted they must be returned for examination before a credit note is issued.
4. If you are unable to repair the machine then we will despatch an engineer to carry out the repair. We will need a purchase order to cover the cost of transport to and from the site and for parts and labour if the repair is not covered under the warranty.
5. If required Demon will arrange for a carrier to collect a damaged machine, if the warranty claim is valid we will pay this cost, if not it will be charged to the customer.

For parts warranty ring Demon and request a warranty claim form faxed to you. This form must accompany any returned parts.

### **Notes:**

You will not invalidate the warranty by investigating faults and repairing them yourself providing you follow our advice. Hire Centres and Dealers are expected to carry out all repairs themselves with Demon crediting faulty parts upon receipt and inspection.

Spare parts fitted to machines are guaranteed for 1 month only or the remainder of the warranty period whichever is longer.



# CE Declaration of Conformity

We **Demon International Ltd**  
Of **Abbots Close, Lee Mill Industrial Estate, Ivybridge, Devon PL21 9GA**

Declare that:

**Equipment** **High Pressure Water Jet Machines**

**Model name/number**

**Serial number**

Conforms to the relevant safety and health related requirements of the appropriate EC Directives. This declaration shall cease to be valid if modifications are made to the machine without our approval.

In accordance with the following EU Directives:

**73/23/EEC** **The Low Voltage Directive – and its amending directives**

**89/336/EEC** **The Electromagnetic Compatibility Directive – and its amending directives**

**98/37/EEC** **The Machinery Directive – and its amending directives**

**2000/14/EC** **Noise Directive**

Harmonised Standards Applied:

**EN 292-1 & EN292-2 (now ISO:12100), EN 60335-2-79, EN55014-1, EN55014-2, EN 61000-3-2**

Applied national standards and technical specifications:

**DS EN 60335-2-79**

Applied conformity evaluation method

|                   | <b>Mini Bowser<br/>P1</b> | <b>Mini Bowser<br/>P2</b> | <b>Mini Bowser<br/>P4</b> | <b>Mini Bowser<br/>D1</b> | <b>Storm Mini<br/>Bowser 1</b> |
|-------------------|---------------------------|---------------------------|---------------------------|---------------------------|--------------------------------|
| <b>Measured</b>   | <b>83</b>                 | <b>83 82</b>              | <b>83</b>                 | <b>88</b>                 | <b>80</b>                      |
| <b>Guaranteed</b> | <b>84</b>                 | <b>84 83</b>              | <b>84</b>                 | <b>89</b>                 | <b>81</b>                      |

## Appendix V

Sound power level dB(A):

**HAV – All triggers and lances have vibration levels below 2.5 m/s/s<sup>2</sup>**

I hereby declare that the equipment named above has been designed to comply with the relevant sections of the above referenced specifications. The unit complies with all essential requirements of the Directives.

Signed:  **Martyn Walke** Authority: *Technical Director* Date:

Technical Documentation Address: Abbots Close, Lee Mill Industrial Estate, Ivybridge, Devon PL21 9GA

*E&OE*



# CA Declaration of Conformity

We **Demon International Ltd**  
Of **Abbots Close, Lee Mill Industrial Estate, Ivybridge, Devon PL21 9GA**

Declare that:

**Equipment: Industrial Pressure Washer**

**Model name/number:**

**Serial number:**

**Conforms to the relevant safety and health related requirements of the appropriate UK Legislation. This declaration shall cease to be valid if modifications are made to the machine without our approval.**

**In accordance with the following UK Legislation:**

**The Electrical Equipment (Safety) Regulations 2016 – and its amended directives**

**Electromagnetic Compatibility Regulations 2016 – and its amended directives**

**Supply of Machinery (Safety) Regulations 2008 – and its amended directives**

**Noise Emission in the Environment by Equipment for use Outdoors Regulations 2001 – and its amended directives**

**Harmonised Standards Applied:**

**British Standards Institution (BSI)**

**Sound power level dB(A):**

|                   | <b>Mini Bowser<br/>P1</b> | <b>Mini Bowser<br/>P2</b> | <b>Mini Bowser<br/>P4</b> | <b>Mini Bowser<br/>D1</b> | <b>Storm Mini<br/>Bowser 1</b> |
|-------------------|---------------------------|---------------------------|---------------------------|---------------------------|--------------------------------|
| <b>Measured</b>   | <b>83</b>                 | <b>83 82</b>              | <b>83</b>                 | <b>88</b>                 | <b>80</b>                      |
| <b>Guaranteed</b> | <b>84</b>                 | <b>84 83</b>              | <b>84</b>                 | <b>89</b>                 | <b>81</b>                      |

**HAV – All triggers and lances have vibration levels below 2.5 m/s/s<sup>2</sup>**

I hereby declare that the equipment named above has been designed to comply with the relevant sections of the above referenced specifications. The unit complies with all essential requirements of the UK Legislation.

**Signed:** 

**Authority:** *Technical Director*

**Date:**

**Technical Documentation Address:** Abbots Close, Lee Mill Industrial Estate, Ivybridge, Devon PL21 9GA